

# PETERLOON 2010

# Guide

For Senior Patrol Leaders, Scoutmasters, Venturing Crew Presidents and Advisors, Webelos Den Leaders and Cubmasters, and Volunteers



## Urgent Notice

### Fire Ban at Peterloon

With the unseasonably warm weather we have been experiencing lately and the lack of rainfall that has accompanied this warmth, we have been watching the conditions of our fields and working with the local fire department to develop a plan for safe use of fires at Peterloon.

Due to the current conditions of the fields, the forecasted dry weather, and the advice of the Miami Township Fire Department, the Peterloon Committee and the management of the Dan Beard Scout Reservation have issued a fire ban for our Peterloon event.

This fire ban means that there will be **NO OPEN FIRES** during the weekend. This ban extends to, but is not limited to, campfires, cooking fires, and charcoal cooking. Due to the severe dryness of the ground and vegetation, this ban will remain in effect regardless of any rain that may fall between now and Peterloon. This action has been taken to protect the safety of all attending Peterloon this weekend.

Please share this information with your unit as you make final preparations for Peterloon. Units who had been planning on cooking over a fire will need to make arrangements to cook on a stove or camp oven. You can help us ensure a fun and safe Peterloon experience for all by complying with this ban. Thank you for your understanding and cooperation, and we look forward to serving you at Peterloon this weekend!

The Peterloon Scouting Committee  
Oct. 11, 2010

Once every two years the Dan Beard Council calls all Boy Scouts to the banks of the Little Miami River for a unique gathering – Peterloon, the longest continuously operating camporee in the history of Scouting.

Here's all the information you'll need to help your Troop, Crew, or Webelos Den find the way to Peterloon and how to make the most of your stay.

## **Welcome to Peterloon**

We have a big weekend planned for you.

Plans for Peterloon 2010 are well underway, and the Scouters working on this event intend to make it the best mini Jamboree yet!

All Boy Scout Troops and Venture Crews are invited along with all Webelos Scouts.

Peterloon will again be held at the Dan Beard Scout Reservation in Loveland, Ohio. Two years ago, 5,048 Scouts from 236 Units attended Peterloon. They included Troops, Crews, and Packs from 11 different Councils from over a four state area.

Named for the family farm where the giant campout was originally held, Peterloon has been a Dan Beard Council event since 1927.

This year's theme is:

*"Achievements of the Past – Foundations for the Future"*.

This theme will be represented throughout the program and especially in the Action Center area where you will experience a number of hands-on Scouting activities. In addition, the program will also highlight the proud heritage of the Scouting organization.

Gateway displays, competitions, and other fun activities will encourage Scouts to make new friends in their camping areas, and they will demonstrate their know-how and team work skills in participating in the various Action Center activities on Saturday.

Of course the midway returns with games and skill competitions organized by each of the eight districts in the Dan Beard Council. Exhibitors including Bass Pro Shops, the U.S. Army and Marines displays and obstacle courses, historical displays, and many other fun and educational events will be on hand.

And a new Arena Show will debut on the Peterloon stage featuring the 100<sup>th</sup> Anniversary of Scouting.

**Steve Richter**  
**Chairman**  
**Peterloon 2010 Executive Committee**

**PETERLOON 2010**

*"Achievements of the Past – Foundations for the Future"*

# What's Inside

## (Table of Contents)

	<u>Page</u>		<u>Page</u>
Action Center .....	20	More Information.....	38
Amazing Race .....	29	National Tour Permit Application .....	50
Arena Show.....	25	Order of the Arrow Ceremony .....	26
Campsite Competition .....	27	Participant Agreement Form.....	48-49
Check In on Friday .....	9	Patrol Flag Competition.....	29
Check Out on Sunday .....	13	Registration .....	6
Class 1 & 2 Medical .....	47	Registration Form.....	40
Competitions .....	26	Religious Services.....	34
Cost .....	7	Remote Parking Area .....	17
District Activity Chairs.....	21	Safety and Sanitation.....	31
District Hosted Events .....	21	Schedules for Peterloon 2010 .....	35-37
District Peterloon Chairs .....	41	Security .....	31
Early Arrivals for Set-Up.....	11	Setting Up Your Campsite .....	11
Evaluation & Feedback Form .....	54	Shuttle Service & Schedule.....	18
Exhibits! Activities! Events! .....	22	Sub-Camps .....	10
Firewood Suppliers .....	12	Trading Posts .....	32
First Aid & Emergency Procedures .....	32	Troops & Crews .....	4
Food Courts & Meals.....	32-33	T-Shirt Order Form .....	42
Forms .....	39	Tug-O-War Competition .....	28
Friday Night Events .....	30	Unit Roster.....	41
Gateway Competition.....	26	Vehicles/Passes .....	9 & 19
Hospitality Area for Adults.....	13	Unit Volunteers Needed.....	5
Late Arrivals on Friday Night .....	11	Unit Volunteers Application Form .....	43
Local Tour Permit Application.....	52	Webelos .....	4
Maps & Driving Directions.....	14	Who Should Attend .....	4
Medical Form.....	44	Wrist Bands.....	9
Moonlight Rappelling .....	33		

## PETERLOON 2010

*“Achievements of the Past – Foundations for the Future”*

## Who Should Attend

Peterloon is a jamboree-style encampment for Webelos, Boy Scouts, and Venturers that's held in the Dan Beard Council every two years.

In 2008, over 5,000 Scouts and leaders from 11 councils in four states (OH, KY, IN, & MI) attended.

In 2010 all Webelos, Boy Scouts and Venturers from anywhere are invited to attend. Webelos who register and camp with a host troop will be able to participate in activities designed especially for them. Webelos may attend for the day only on Saturday and do not have to spend the night if they prefer not to, but they must still register (at a lower cost).

**NOTE:** All participants — Webelos, Boy Scouts, Venturers, adult leaders and other adults attending with them, and all volunteer staffers — must be registered to attend Peterloon.

Registration closed on September 15, 2010. There is no on-site registration process.

Saturday only visitors may enter to observe Peterloon but must first check-in at the entrance gate. **Only registered or checked-in people will be permitted to enter Peterloon.**

## Troops & Crews

Boy Scouts and Venturers of all ages are invited to attend Peterloon 2010. All Councils from anywhere in the Scouting world are eligible to attend and are invited. In years past we have had the privilege of hosting Scouts from Canada and Israel and would love to entertain more Scouts from these and other parts of the world.

## Webelos

There are no differences in activities or procedures for Webelos 1 vs. Webelos 2. All Webelos Scouts will be treated the same at Peterloon. Webelos may register in one of two ways.

1. Webelos wanting to camp overnight must register with a Boy Scout Troop which will act as your host. Host troops should preferably be a troop with which your Pack is already affiliated. You can camp both Friday and Saturday nights with your host troop!
2. Alternatively, Webelos not camping with a troop may attend for Saturday during the day only but still must register with your host troop (although at a reduced fee). There is no need from Council's perspective to list the Saturday only adults accompanying these Webelos since these adults are being admitted for free and will not receive any free patches. They will, however, have to sign-in and obtain a wrist band upon arrival Saturday before being allowed to enter the camporee.

Webelos Dens need to provide their own leadership to attend and should not depend on their host Scout Troop. The Webelos Den leadership should also be responsible for making sure proper health forms are collected for their dens.

The Guide to Safe Scouting rules should be followed for sleeping arrangements. *"...no youth may stay in a tent with an adult who is not their Parent or Guardian."*

### **PETERLOON 2010**

***"Achievements of the Past – Foundations for the Future"***

Webelos leaders and Scoutmasters are responsible for making arrangements for transportation, menu planning, and cooking. Webelos and their leaders must arrange to have meals with the host troop or plan to provide your own meals.

They are also responsible for completing combined Peterloon registration forms for both units, which must be filed together, to include an accurate count of the number of Webelos Scouts, Boy Scouts, and adults who will be camping overnight. This count is needed to plan adequately-sized campsites.

If you don't know a troop, attend your district's roundtables. In the Dan Beard Council roundtables, Peterloon Chairs and Scoutmasters will be present to meet with you and help you select a host troop for Peterloon.

Check out our **Webelos FAQ** page at <http://www.peterloon.danbeard.org/Webelos-FAQ.htm> for more details.

---

## Unit Volunteers Needed

To adequately staff all Peterloon activities, hundreds of volunteers will be needed.

- We are asking each unit to volunteer two adults on Saturday to work 4 hours each. They will be working in the Food Court area, Action Center, or some other needed area. This will be in addition to any staffing needs a unit or district may have to manage and run its own events or any members a unit may have on any of the standing Peterloon Committees. These unit volunteers' names will be placed in a pool for assignment as needed to help run the many functions and activities of the overall encampment.
- Use the Unit Volunteer Application form in the back of this Guide (and also available [on-line at http://www.peterloon.danbeard.org/PDFs/Vol-Sheet-P2010-FIB.pdf](http://www.peterloon.danbeard.org/PDFs/Vol-Sheet-P2010-FIB.pdf)) to sign up for the four hours on Saturday. Each unit should submit this form designating two unit volunteers with your unit registration by **Sept. 15, 2010** so we can plan for the volunteer assignments required.
- All volunteers must be registered with your unit, even if they plan to arrive on Saturday.
- Staff and volunteers who work at least 4 hours will receive a Peterloon official collector's staff gift as a means of recognition and in appreciation for their service.

For more information about what's involved with the various volunteer jobs and other information about how you and your unit's parents can help, contact Tim Carter, Peterloon volunteer coordinator, at (513) 481-7791 or by email [volunteer@peterloon.danbeard.org](mailto:volunteer@peterloon.danbeard.org).

## PETERLOON 2010

*“Achievements of the Past – Foundations for the Future”*

# Registration

All participants must be registered to attend Peterloon. This includes Boy Scouts, Venturers, Webelos, adult leaders, other adults attending with them, and the volunteer staffers.

**Saturday only visitors may enter to observe Peterloon but must first check-in at the entrance gate. Only registered or checked-in people will be permitted to enter Peterloon.**

## Forms:

You must include the following forms with your registration by the registration deadline of **Sept. 15, 2010** (discount deadline is **Aug. 15, 2010**):

- **Registration Form:**
  - a. you may Register On-Line at <http://secure.danbeard.org/registration/calendar/detail.asp?ActivityKey=739054>
  - b. or complete the Manual Registration Form in the back of this Guide and send it to:  
Dan Beard Council, BSA  
10078 Reading Rd  
Cincinnati, OH 45241
- If you use the Manual Registration Form above, please include a completed **Unit Roster**, which you can find located in the back of this Guide and also available on-line at <http://peterloon.danbeard.org/PDFs/Unit-Roster-P2010.pdf>
- **Unit Volunteer Application** -- Two Unit Volunteers are needed from EVERY unit for four hour shifts each. The available shifts are:  
Sat. AM (8:30 - 12:30)  
Sat. PM (12:00 - 4:00)

Please enter their names on the Unit Volunteer Form form located in the back of this Guide and also available on-line at <http://peterloon.danbeard.org/PDFs/Vol-Sheet-P2010.pdf>

**Tour permits are not required for units within the Dan Beard Council.**

**Units from outside of Dan Beard Council are required to bring a tour permit.**

**The links below are provided for your convenience.**

- National Tour Permit Application (over 500 miles & out of Dan Beard Council )  
- also available on-line at <http://danbeard.org/pdf/General/NtlTour.pdf>
- Local Tour Permit Application (under 500 miles & out of Dan Beard Council)  
- also available on-line at <http://danbeard.org/pdf/General/LocalTour.pdf>

Also the unit leader at Peterloon must have in his/her possession a completed copy of the new **BSA Annual Health and Medical Record Form** for each youth and adult participant. This form became effective 1/1/2010. Parts A & C of the form are to be completed for anyone regardless of age whenever the duration of an event is less than 72 hours and there are adequate medical services available, as is the case at Peterloon. Part B of the form (physical exams by a physician) are not required for Peterloon participants. The form is available on-line at <http://danbeard.org/pdf/annualhealth.pdf>

## PETERLOON 2010

*“Achievements of the Past – Foundations for the Future”*

## Cost:

Costs shown are per person.

Category	Registration Received by 8/15/2010	Registration Received between 8/16/10 - 9/15/10
In Council	\$16	\$19
Out of Council	\$16	\$19
Webelos camping with host troop *	\$16	\$19
Webelos attending Saturday ONLY	\$9	\$12
Den Leaders / Adults visiting with Webelos on Saturday Only **	No Charge	No Charge
T-shirts (not included in registrations, costs are extra)	\$6.00 for S, M, L, XL \$8.00 for XXL \$9.00 for XXXL \$10.00 for XXXXL	
<p>All T-Shirts must be ordered by 9/15/2010 to get the prices shown above. After 9/15/2010, T-shirt orders are FINAL No Refunds or Exchanges at the event. If you want to buy additional T-Shirts at Peterloon, they will cost \$4 more each over the prices shown above.</p>		

EACH PAID REGISTERED PETERLOON PARTICIPANT WILL RECEIVE:

- Guidebook (with map and schedule)
- Peterloon 2010 patch
- To keep costs down, you will NOT receive a free official Peterloon 2010 T-shirt with the standard registration fee. However, You will have the option of preordering T-shirts by size for those wanting them by pre-ordering them on the separate [T-Shirt Order Form](http://peterloon.danbeard.org/PDFs/T-Shirt-Order-Form.pdf) at <http://peterloon.danbeard.org/PDFs/T-Shirt-Order-Form.pdf>

\* All registered Webelos Scouts will be admitted to participate in events designed especially for them and to participate where appropriate in other events designed for the older Scouts. **There is no limit to the number of Webelos or leaders who can register.**

\*\* No unregistered Webelos, Boy Scouts, Venturers, or leaders will be admitted.

Adults accompanying Webelos Scouts on Saturday will be admitted free, but their admission does not include the Peterloon 2010 official collector's patch. Souvenirs will be available for purchase at trading posts in camp.

Your registration fees also help pay for event insurance, program supplies, and the Saturday activities including the Action Center exhibitors and Saturday night's new and enhanced Arena Show.

Advance registration is required to attend Peterloon 2010! Due to limited parking, each troop will receive by mail two cargo vehicle passes to enter the Peterloon campsite for unloading only. Due to

## PETERLOON 2010

*“Achievements of the Past – Foundations for the Future”*



reductions in the amount of camping space available in the fields, there will be no vehicle parking in the fields after unloading.

Registration must be received by **September 15, 2010**. This will allow for mail delivery of your cargo vehicle passes, campsite assignments (remember campsite assignments will be issued based on order of registration, so be sure to register early), and other Peterloon registration information. Only cargo vehicles with passes will be admitted to the Peterloon campsite and for unloading purposes only. After unloading they must park in the remote parking area with all other vehicles. No exceptions!

Your unit will receive its campsite space allocation based on the number of people pre-registered with their deposit on record at the Dan Beard Council Service Center by close of business, Friday, September 15, 2010. **No registrations will be accepted after September 15, 2010.**

Registration this year is first-register-first-camp site. We are camping Jamboree style and not by districts. This will provide your Scouts the opportunity to encounter other Scouts from other Districts in Dan Beard Council and from other Councils.

Individuals or groups who cancel a program reservation 60 days prior to the date of the event will receive a refund of fees paid less 20 percent administration charge. No refunds made after the 60-day cancellation deadline.

### **Payment:**

Make checks payable in U.S. funds to:

Dan Beard Council, BSA, for Peterloon, account # 6801-052.

Mail check with registration form to:

Peterloon 2010

Dan Beard Council, Boy Scouts of America

10078 Reading Rd.

Cincinnati, Ohio 45241

**We look forward to seeing you there!**

**PETERLOON 2010**

***“Achievements of the Past – Foundations for the Future”***



# Check In on Friday

Before your troop departs for Peterloon from your home community, finalize your Unit Roster for check-in, load all gear into cargo hauling vehicles, and load Scouts into passenger vehicles.

**Vehicle passes** — Each troop that pre-registers will be issued two vehicle passes for cargo hauling vehicles to enter your Peterloon campsite. Only cargo hauling vehicles displaying authorized vehicle passes will be admitted into the Peterloon campsite area at Cub World. After unloading they must be driven to the remote Peterloon parking area. Due to new conservancy issues, there will be no parking in the camping fields this year.

**Where to go** — Passenger vehicles are to proceed to the designated off-site parking area for unloading (see map on page 15). Scouts and leaders not riding in cargo hauling vehicles will board a shuttle bus there to take you to the Peterloon campsite.

- Make sure your Scouts know your Sub-Camp area (1, 2, 3, 4, or 5). Maps will be available on the buses to remind Scouts of Sub-Camp locations.
- Registration by the Sept. 15 deadline will ensure smooth check-in.

**Locating your campsite** —Your unit will be assigned a campsite in one of the five Sub-Camps. You'll receive information about your campsite by mail after you've registered your unit. When you arrive, look for your Sub-Camp HQ for additional information.

Each Sub-Camp is assigned a number between 1 and 5. As you enter the Peterloon camping area and come to the "Y" in the road, those in Sub-Camp 1 will go to the right and follow the signs into your Sub-Camp. All others will go to the left and look for the number of their Sub-Camp along the road.

When you arrive at your Sub-Camp, pull off to the right and look for guides who will provide maps showing your campsite location.

Your campsite identification number will consist of the following:

- A number between 1 and 5 indicating the number of your Sub-Camp.
- A letter between A and E indicating the name of the aisle you should turn into in your Sub-Camp.
- A hyphen separating the Aisle ID from your specific Campsite ID.
- A number between 01 and 20 indicating the number of your campsite on the aisle. Odd numbered campsites will be on your left, and even numbered campsites will be on your right as you drive up the aisle toward the river.
- Example, 2A-05 will be the 3rd campsite on your left in the first aisle in Sub-Camp 2.

Please try to clear the entrance road as quickly as possible and keep the traffic moving. Friday evening can be very slow and congested otherwise.

We strongly encourage units to arrive on Thursday anytime after 12:00 noon and locate and set up your campsites early. Your District Sub Camp Commissioners should have guides waiting to help you then. Check with them to make sure.

Only vehicles with official vehicle tags will be allowed to enter the Peterloon encampment area on Friday.

Once you unload your vehicles and drop any trailers you may have, please continue driving toward the river, turn right, and follow the exit road signs to leave camp. Due to reduced space this year, no vehicles will be allowed to remain parked in the camping fields.

## PETERLOON 2010

*“Achievements of the Past – Foundations for the Future”*

**Unloading your gear** — To unload cargo-hauling vehicles, go to your assigned Sub-Camp. Every driver needs to know his or her Sub-Camp Number (1,2,3,4, or 5) in order to find your assigned camping area. Follow the guides and signs to your Sub-Camp's location.

**Check-In** — Check in with Area Staff at Sub-Camp HQ. Have your completed [Unit Roster](#) with you. (You can use the Unit Roster Form in the back of this Leaders Guide.) Peterloon staff will direct you to your campsite including indicating boundaries, latrines, water, and other details you'll need for setting up.

**Wrist Bands** — Your registration packet when you check-in will include colored wrist bands for each Scout attending Peterloon with you. All Boy Scouts and Venturers will wear one color, and all Webelos will wear a different color. In addition, those Scouts participating in the Amazing Race will receive a third color, so those Scouts will wear two different colored wrist bands. Additional wrist band colors will be issued to those registered for the Rappelling event and others for all walk-in youth or adults. The wrist bands are required for admission to Peterloon and must be worn all weekend. Replacements will not be issued.

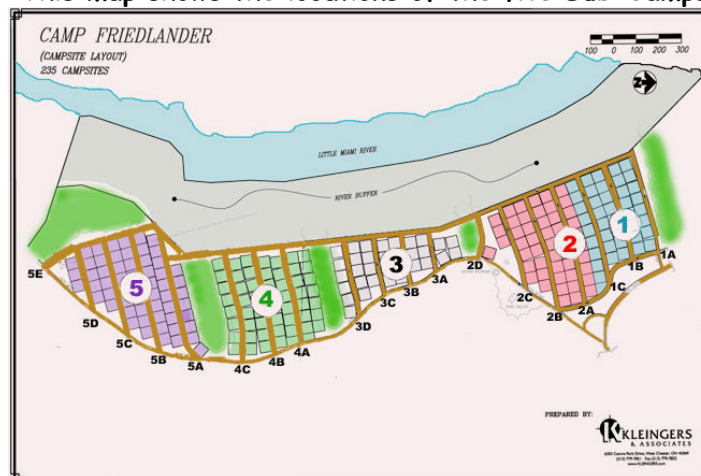
**Cargo vehicles** — Must be moved to the designated parking area in the off-site parking area immediately after unloading. Do not wait until later to move your vehicle. All vehicles must be out of your campsite by 9 p.m. Friday.

## Sub-Camps

Here is the list of **Sub-Camps** and **Sub-Camp Commissioners**:

SUB-CAMP	SUPPORTING DISTRICT	SUB-CAMP COMMISSIONER	EMAIL	PHONE
1	Maketewa	Mike Ehler	<a href="mailto:michaelehler@gmail.com">michaelehler@gmail.com</a>	859-317-0244 (m)
2	W.H.Harrison	Bill Wieland	<a href="mailto:WJWieland@cinci.rr.com">WJWieland@cinci.rr.com</a>	513-884-2119 (m)
3	Ft. Hamilton	Brian Griffin	<a href="mailto:bgriffin@cinci.rr.com">bgriffin@cinci.rr.com</a>	513 608-0033 (m)
4	Hopewell	Scott Douglass	<a href="mailto:sedoug@fuse.net">sedoug@fuse.net</a>	513-459-1547 (h)
5	Blue Jacket	Lee Carmichael	<a href="mailto:dougcarmichael@netzero.com">dougcarmichael@netzero.com</a>	513 582-2017 (m)

This map shows the locations of the five Sub-Camps



## PETERLOON 2010

*“Achievements of the Past – Foundations for the Future”*

## Early Arrivals for Set-Up

If you want to set up camp before 2 p.m. Friday

- The Peterloon site opens officially at **2 p.m. on Friday, Oct. 15**. Units wishing to set up their campsite prior to that time may do so with permission of the Peterloon Campsite Chair (see name and contact information below).
- Only cargo vehicles with permits will be admitted to the Peterloon site.
- No unit will be allowed to set up prior to **noon Thursday, Oct. 14**.
- Early arrivals on Thursday can set up their campsites and may camp overnight if they wish so long as there is appropriate adult supervision on site.
- To arrange early arrival and set-up, contact **Hal Wood**, the **Peterloon Campsite Chair**, by email at [camp@peterloon.danbeard.org](mailto:camp@peterloon.danbeard.org) or by phone at 513.509.1525, no later than **9:00 p.m., Tuesday, Oct. 5**.

## Late Arrivals on Friday Night

If you have parents delivering Scouts to Peterloon after football games or other activities on Friday night, be sure to direct them to the remote parking area off Wards Corner Road so Scouts can board the shuttle bus, which will run to the Peterloon site until **10:45 p.m.**

No cars will be admitted at gates of Dan Beard Scout Reservation without a permit, so tell parents to take Scouts to the parking area off Wards Corner Road just south of the I-275 exit.

### **SEE PARKING PLAN and SHUTTLE SCHEDULE**

After 10:45 p.m. Friday, parents will have to drop off late arrivals at the Peterloon entrance (Lower Craig Cub World Entrance of the Dan Beard Scout Reservation) located at 6035 Price Rd.

No vehicles will be admitted, however, so remind your Scouts that they will have to carry in their gear. Remind them also to bring a flashlight, and be sure they know their unit number and the Sub-Camp (1,2,3,4, or 5) where your unit is staying.

## Setting Up Your Campsite

**General guidelines for setting up your campsite.**

- Do not block access road with vehicles or gear.
- Patrols/Troops set up camp.
- Set up dining fly first - put gear under it to protect from weather.
- Set up tents - then move personal gear into tents. Lay out sleeping gear.
- Set up cooking and eating area, secure water and fuel supply.
- Remember no ground fires. ALL fires need to be off the ground.
- Due to Green Ash Borer control policies, all firewood needs to be obtained from within Clermont County. See the list of available firewood distributors on the next page.
- Last thing up is Gateway, if you choose to have a gateway.

**PETERLOON 2010**

***“Achievements of the Past – Foundations for the Future”***

# Firewood Suppliers - Clermont County



Because of the spread of the invasive Emerald Ash Borer, the US Forestry Department and the Ohio Department of Natural Resources have regulated the transportation of firewood across state and county lines. Since Peterloon will be held in Clermont County, all firewood being brought into Peterloon must be purchased in Clermont County. You can read more details at Dan Beard Council's Firewood Policy Page at [http://www.danbeard.org/pdf/camping/Camp\\_Firewood\\_Policy.pdf](http://www.danbeard.org/pdf/camping/Camp_Firewood_Policy.pdf).

If you wish to buy firewood in Clermont County to burn at Peterloon 2010, here are some places there that sell it:

<p>Cobb Firewood Bill Cobb, Owner 5858 Monassas Run Rd. Milford, OH 45150 (513) 575-5446 (513) 615-8772 (cell) <a href="mailto:williamcobb@fuse.net">williamcobb@fuse.net</a> (call ahead to arrange quantity &amp; delivery)</p>	<p>Meijer at 1082 State Rt. 28 Milford, OH 45150 (3.5 miles from camp) (513) 576-5500</p>
<p>Krogers at 6388 Branch Hill Guinea Pike at Loveland-Miamiville Rd. (1.5 miles from camp) (513) 697-4800</p>	<p>Miamiville Firewood Sam Latham, Owner 349 Center St. Miamiville, OH 45147 (513) 248-8669</p>
<p>Mark Shinkle 1414 Zimmer Rd Williamsburg, OH 45176 (513) 724-1564 (will deliver)</p>	<p>Zinzinnati Tree 497 Massey Ct. Miami Township 45255 (513) 683-8133  (call first, they have various staging lots)</p>

Note: While some of these vendors say they will deliver, please be advised they will not be allowed into the camp after 12:00 noon on Friday, Oct. 15.

If you do arrange for any delivery after that time, you will need to meet them yourself at the camp entrance and transport the firewood to your campsite yourselves as there will be no drop off, storage, or delivery service available from the rangers.

You may wish to pick up your firewood from the suppliers at their work places and bring it in with you when you arrive.

**PETERLOON 2010**

***“Achievements of the Past – Foundations for the Future”***

## Check Out on Sunday

All units are asked to follow the "Leave No Trace" camping guidelines. Campsites must be clean enough for camp rangers to be able to cut grass without having to get off tractors and remove objects.

Place rocks, logs, and natural debris outside of the camping fields and three feet into the tree line or other uncut areas.

**More about "Leave No Trace" on the Web at:**

[www.scouting.org](http://www.scouting.org)

[www.LNT.org](http://www.LNT.org)

All units must police their campsite and dispose of bagged trash properly. Dumpsters will be provided at each Sub-Camp HQ. No trash is to be left in the Peterloon fields, and please do not pile trash on the sides of the dumpsters.

Sub-Camp staff will inspect campsites before releasing units. **Inspections begin after religious services are over (*A Scout is Reverent!*)**. Alert the staff at Sub-Camp HQ when you are ready for inspection.

Sub-Camp staff will hold Peterloon patches and ribbons until campsites are clean and unit is ready to leave.

**IMPORTANT** - Only cargo vehicles with permits will be allowed to enter the Sub-Camps to load gear.

This is for the safety of the Peterloon participants and to ensure that traffic congestion is kept to a minimum so that units can pack up and leave smoothly Sunday.

**Out of respect for the religious services being conducted Sunday morning, no cargo vehicles will be permitted to enter Peterloon until after 10:00 a.m. Sunday.**

Make sure your cargo vehicle drivers are aware of this.

We apologize for any inconvenience this may cause, but with more than 5,000 participants on the Peterloon site, all internal camp roads will be closed to ensure safety.

## Hospitality Area for Adults

**LEADERS, TAKE A BREAK AND SAY "HELLO"**

Peterloon HQ (Cub World Administration Building)

Open 9 a.m. to 5 p.m. Saturday for adult leaders only.

Stop by for coffee, hot tea, hot chocolate, and a chance to meet other adult leaders and renew old friendships.

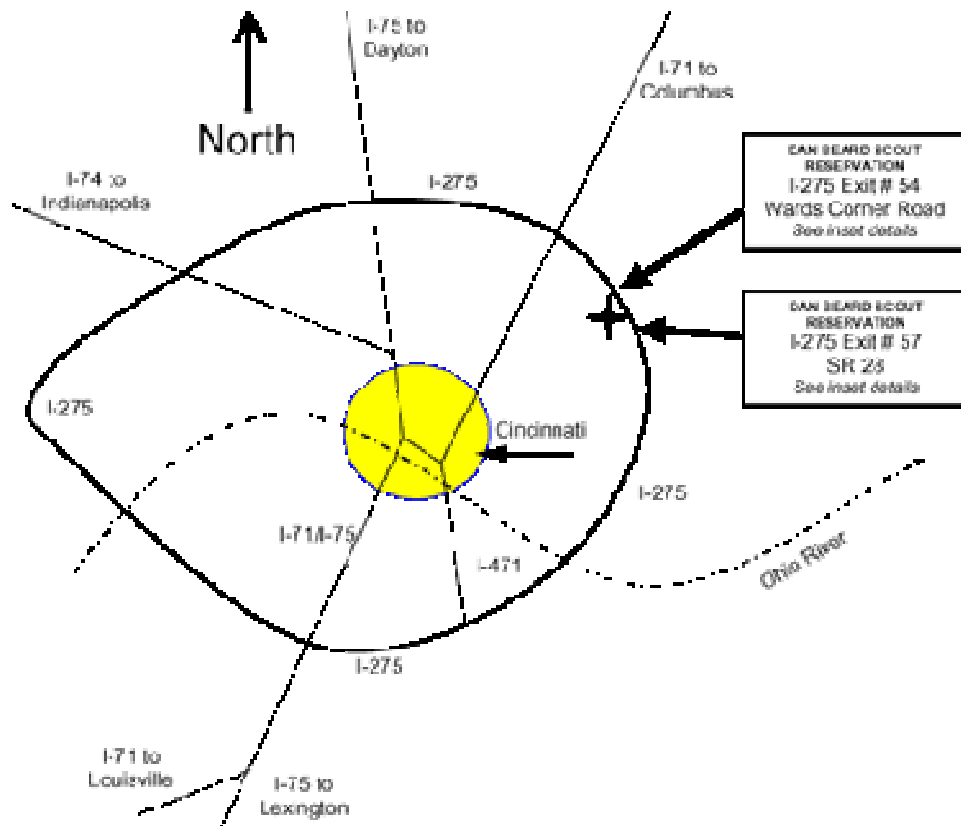
**PETERLOON 2010**

***"Achievements of the Past – Foundations for the Future"***

# Maps & Driving Directions

Peterloon 2010 will be held in Camp Lower Craig (also known as "Cub Scout Adventure World") at the Dan Beard Scout Reservation located in the northeast quadrant of Cincinnati just off I-275. The address is 6035 Price Road, Loveland, Ohio 45140

## Map -- Driving Directions



The Dan Beard Scout Reservation is located northeast of Cincinnati off I-275 between the towns of Loveland and Milford, Ohio.

There are three entrances to the reservation:

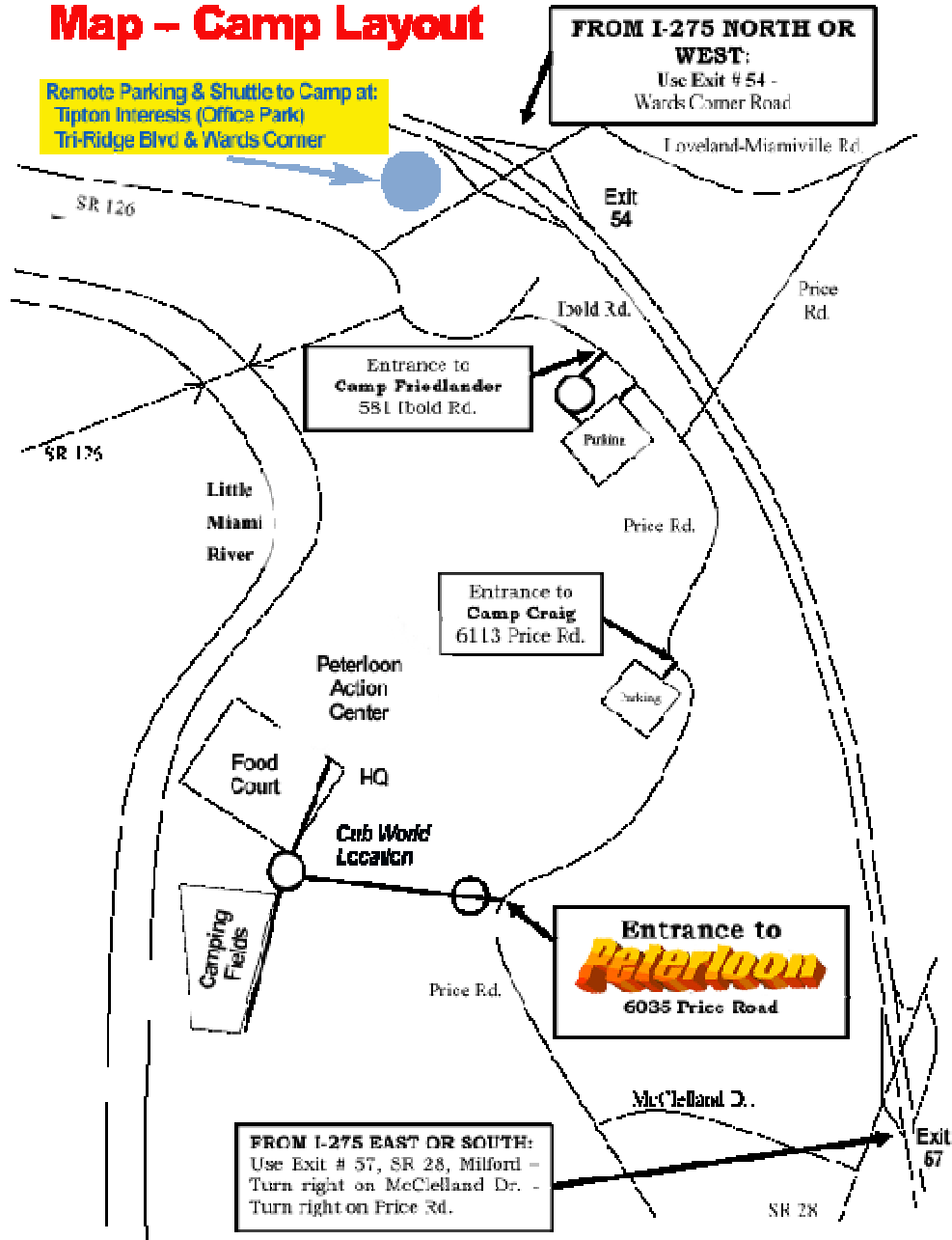
1. **Camp Friedlander** - 581 Bold Rd. - Phone 513-831-8311 - Fax 513-831-8475 (main camp)
2. **Camp Upper Craig** - 6113 Pike Rd. - Phone 513-248-8895 (staffed only during summer)
3. **Camp Lower Craig** - 6035 Price Rd. - (site for Peterloons 2008)  
& **Cub Scout Adventure World** - Phone 513-248-2211 - Fax 513-248-2527 (staffed only during summer)

All Camp addresses are Loveland, Ohio 45140  
**VISITORS TO CAMP MUST FILE A USE OF CAMP APPLICATION AT THE SCOUT CENTER  
 NO LESS THAN 72 HOURS PRIOR TO ARRIVAL**

**PETERLOON 2010**  
*"Achievements of the Past – Foundations for the Future"*

To drive directly to the camp, from I-275 take either:  
Exit #54 (Wards Corner Rd.) or  
Exit #57 (SR 28)

### Map – Camp Layout



See the **remote parking** and **shuttle service** pages for details on using the remote parking facilities.



Satellite View

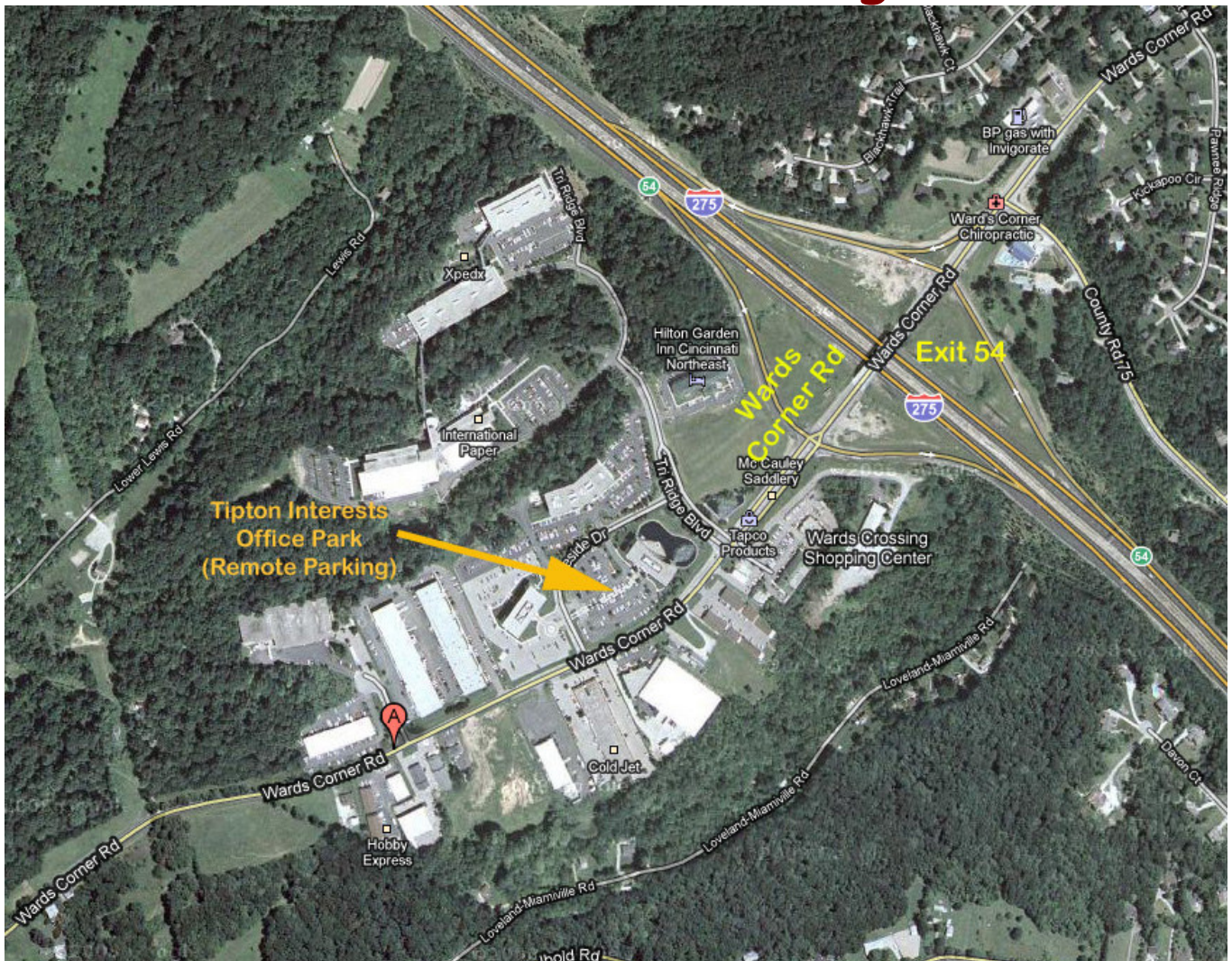


**PETERLOON 2010**

*“Achievements of the Past – Foundations for the Future”*



# Peterloon Remote Parking Area



Note: All Participants will park in the remote parking area (including cargo vehicles after unloading):

Location: Tipton Interests, Inc (office park)  
Wards Corner & Tri-Ridge Blvd.  
Cincinnati, Ohio

*Note: Tipton Interests is providing this remote parking area at no charge to the Dan Beard Council. Please respect their property.*

Directions: I-275 to Exit 54 (Wards Corner Road)  
Turn South onto Wards Corner Road  
Proceed to Peterloon parking lot on the right  
The stone sign at the entrance says "Wards Corner - Tipton Interests Inc."  
The parking lot staff will direct you to available parking spaces.  
DO NOT park in any space that has a traffic cone

## PETERLOON 2010

*"Achievements of the Past – Foundations for the Future"*

**Parking Tips:**

To make your travel to Peterloon and parking more enjoyable, follow these tips:

- Arrive before or after the highest peak time - most people arrive between 5 PM and 8PM on Friday.
- Arrange to have gear brought to the camp in a vehicle with a cargo vehicle pass.
- Consider carpooling with another Scout

If any Scouts need to leave camp for another event, arrange to meet them at the remote Peterloon parking area shown on the previous page. No vehicles will be allowed into the Peterloon site between 9:00 pm Friday and 10:00 am Sunday. Any vehicles desiring to access the Peterloon site during authorized entry hours must have a permit.

**GENERAL DRIVING DIRECTIONS TO THE CAMP**

<p><b>Directions from the East on I-275:</b></p> <ul style="list-style-type: none"> <li>• Follow I-275 West to the Blanchester- Milford Route 28 exit (exit #57).</li> <li>• Turn left off the exit ramp onto State Route 28 and merge into the far right lane.</li> <li>• Cross over the highway and go through one stoplight.</li> <li>• At the second light, make a right onto McClellan Drive.</li> <li>• At the stop sign, make a right onto Price Road. Follow Price Road, and the flashing "Camp Entrance" sign at the bottom of the hill will indicate that the entrance Cub World will be on the left.</li> </ul>	<p><b>Directions from the West on I-275:</b></p> <ul style="list-style-type: none"> <li>• Follow I-275 East to the Ward's Corner Road exit (exit #54).</li> <li>• Turn left off the exit ramp onto Wards Corner Road and merge into the far right lane.</li> <li>• Cross over I-275 and go through one stoplight.</li> <li>• Make the first right onto Loveland-Miamiville Rd.</li> <li>• Turn right onto Price Road.</li> <li>• Follow Price Road across I-275 and make a left at the stop sign to continue on Price Road.</li> <li>• Go past Camp Craig; the flashing "Camp Entrance" sign at the bottom of the hill will indicate the Cub World entrance on the right.</li> </ul>
----------------------------------------------------------------------------------------------------------------------------------------------------------------------------------------------------------------------------------------------------------------------------------------------------------------------------------------------------------------------------------------------------------------------------------------------------------------------------------------------------------------------------------------------------------------------------------------------------------------------------	--------------------------------------------------------------------------------------------------------------------------------------------------------------------------------------------------------------------------------------------------------------------------------------------------------------------------------------------------------------------------------------------------------------------------------------------------------------------------------------------------------------------------------------------------------------------------------------------------------------------------------------------------------------------------------------

## Shuttle Service & Schedule

**Friday** - Shuttle hours are from 2:00 PM to 10:45 PM. Buses will run between the remote Peterloon parking lot and the Peterloon campsite. Parking coordinators will direct you to a parking space where you will be able to board the shuttle to Peterloon. See Remote Parking Lot maps on pages 15 & 16.

**Saturday Morning** - Shuttles will run all morning beginning at 7:00 AM from the remote Peterloon parking lot to the Peterloon campsite. Parking coordinators will direct you to a parking space where you can then board the shuttle to Peterloon. See Remote Parking Lot maps on pages 15 & 16. These shuttles will also be available for those who need to leave Peterloon for another event and then return later in the day.

**Saturday Afternoon** - Shuttles will run all afternoon for those who need to leave and return later in the day or for those who choose to leave after the Action Center closes (around 4:30 PM).

**Saturday Evening** - Shuttles will run until 11:00 PM for those who choose to leave after the Arena Show (around 10:00 PM).

**Sunday Morning** - Shuttles will pick up at the Peterloon campsite and drop off in the remote Peterloon parking lot. The shuttles will run from 10:00 AM until everyone has been returned to the remote parking lot.

### **PETERLOON 2010**

*"Achievements of the Past – Foundations for the Future"*



# Vehicles

## Passes are required to enter Peterloon campsite

To ensure the safety of participants and ease traffic congestion at Peterloon, the following vehicle plan has been developed:

- Each unit that registers by Sept. 15 will be mailed 2 cargo vehicle passes that will allow the unit to haul their equipment into the Peterloon campsite.
- The requirements for vehicles to display passes to enter Peterloon will begin at 2:00 PM on Friday, Oct. 15, 2010.
- With the 2 cargo vehicle passes, troops will receive their Sub-Camp assignment. Make sure you share with all Scouts and leaders your assigned Sub-Camp and campsite location.
- Vehicles hauling passengers only will be routed to the Peterloon remote parking area off Wards Corner Road near exit #54 from I-275. From there, shuttle buses will transport you to the Peterloon campsite.
- Troop trailers will be allowed into the campsite, and may remain parked at the campsite. The towing vehicle must have a cargo vehicle pass and must be moved to the Peterloon remote parking lot near the intersection of Wards Corner and I-275 immediately after unloading. (see Peterloon Remote Parking Maps on pages 15 & 16). No cargo vehicles will be allowed to remain in the Peterloon camping fields.
- There will be no traffic on the Peterloon site roads after 9:00 p.m. on Friday, and out of respect for the 12<sup>th</sup> Law of Scouting there will be no cargo vehicle access until 10:00 Sunday morning. (Exception: emergency traffic and support vehicles necessary to the operation of Peterloon, First Aid or other special needs.)

## Special needs passes

- Individuals with disabilities may apply to Dan Beard Council for a "Special Needs Vehicle Pass" to park at the troop campsite. Written certification from a licensed physician will be required in order to have a "Special Needs Pass" approved by the Peterloon committee. You must request a "Special Needs Pass" application with your registration by Sept. 15. Applications for Special Needs Passes will not be accepted after Sept. 15.