

PETERLOON 2010

Guide

For Senior Patrol Leaders, Scoutmasters, Venturing Crew Presidents and Advisors, Webelos Den Leaders and Cubmasters, and Volunteers



Urgent Notice

Fire Ban at Peterloon

With the unseasonably warm weather we have been experiencing lately and the lack of rainfall that has accompanied this warmth, we have been watching the conditions of our fields and working with the local fire department to develop a plan for safe use of fires at Peterloon.

Due to the current conditions of the fields, the forecasted dry weather, and the advice of the Miami Township Fire Department, the Peterloon Committee and the management of the Dan Beard Scout Reservation have issued a fire ban for our Peterloon event.

This fire ban means that there will be **NO OPEN FIRES** during the weekend. This ban extends to, but is not limited to, campfires, cooking fires, and charcoal cooking. Due to the severe dryness of the ground and vegetation, this ban will remain in effect regardless of any rain that may fall between now and Peterloon. This action has been taken to protect the safety of all attending Peterloon this weekend.

Please share this information with your unit as you make final preparations for Peterloon. Units who had been planning on cooking over a fire will need to make arrangements to cook on a stove or camp oven. You can help us ensure a fun and safe Peterloon experience for all by complying with this ban. Thank you for your understanding and cooperation, and we look forward to serving you at Peterloon this weekend!

The Peterloon Scouting Committee
Oct. 11, 2010

Once every two years the Dan Beard Council calls all Boy Scouts to the banks of the Little Miami River for a unique gathering – Peterloon, the longest continuously operating camporee in the history of Scouting.

Here's all the information you'll need to help your Troop, Crew, or Webelos Den find the way to Peterloon and how to make the most of your stay.

Welcome to Peterloon

We have a big weekend planned for you.

Plans for Peterloon 2010 are well underway, and the Scouters working on this event intend to make it the best mini Jamboree yet!

All Boy Scout Troops and Venture Crews are invited along with all Webelos Scouts.

Peterloon will again be held at the Dan Beard Scout Reservation in Loveland, Ohio. Two years ago, 5,048 Scouts from 236 Units attended Peterloon. They included Troops, Crews, and Packs from 11 different Councils from over a four state area.

Named for the family farm where the giant campout was originally held, Peterloon has been a Dan Beard Council event since 1927.

This year's theme is:

"Achievements of the Past – Foundations for the Future".

This theme will be represented throughout the program and especially in the Action Center area where you will experience a number of hands-on Scouting activities. In addition, the program will also highlight the proud heritage of the Scouting organization.

Gateway displays, competitions, and other fun activities will encourage Scouts to make new friends in their camping areas, and they will demonstrate their know-how and team work skills in participating in the various Action Center activities on Saturday.

Of course the midway returns with games and skill competitions organized by each of the eight districts in the Dan Beard Council. Exhibitors including Bass Pro Shops, the U.S. Army and Marines displays and obstacle courses, historical displays, and many other fun and educational events will be on hand.

And a new Arena Show will debut on the Peterloon stage featuring the 100th Anniversary of Scouting.

Steve Richter
Chairman
Peterloon 2010 Executive Committee

PETERLOON 2010

"Achievements of the Past – Foundations for the Future"

What's Inside

(Table of Contents)

	<u>Page</u>		<u>Page</u>
Action Center	20	More Information.....	38
Amazing Race	29	National Tour Permit Application	50
Arena Show.....	25	Order of the Arrow Ceremony	26
Campsite Competition	27	Participant Agreement Form.....	48-49
Check In on Friday	9	Patrol Flag Competition.....	29
Check Out on Sunday	13	Registration	6
Class 1 & 2 Medical	47	Registration Form.....	40
Competitions	26	Religious Services.....	34
Cost	7	Remote Parking Area	17
District Activity Chairs.....	21	Safety and Sanitation.....	31
District Hosted Events	21	Schedules for Peterloon 2010	35-37
District Peterloon Chairs	41	Security	31
Early Arrivals for Set-Up.....	11	Setting Up Your Campsite	11
Evaluation & Feedback Form	54	Shuttle Service & Schedule.....	18
Exhibits! Activities! Events!	22	Sub-Camps	10
Firewood Suppliers	12	Trading Posts	32
First Aid & Emergency Procedures	32	Troops & Crews	4
Food Courts & Meals.....	32-33	T-Shirt Order Form	42
Forms	39	Tug-O-War Competition	28
Friday Night Events	30	Unit Roster.....	41
Gateway Competition.....	26	Vehicles/Passes	9 & 19
Hospitality Area for Adults.....	13	Unit Volunteers Needed.....	5
Late Arrivals on Friday Night	11	Unit Volunteers Application Form	43
Local Tour Permit Application.....	52	Webelos	4
Maps & Driving Directions.....	14	Who Should Attend	4
Medical Form.....	44	Wrist Bands.....	9
Moonlight Rappelling	33		

PETERLOON 2010

“Achievements of the Past – Foundations for the Future”

Who Should Attend

Peterloon is a jamboree-style encampment for Webelos, Boy Scouts, and Venturers that's held in the Dan Beard Council every two years.

In 2008, over 5,000 Scouts and leaders from 11 councils in four states (OH, KY, IN, & MI) attended.

In 2010 all Webelos, Boy Scouts and Venturers from anywhere are invited to attend. Webelos who register and camp with a host troop will be able to participate in activities designed especially for them. Webelos may attend for the day only on Saturday and do not have to spend the night if they prefer not to, but they must still register (at a lower cost).

NOTE: All participants — Webelos, Boy Scouts, Venturers, adult leaders and other adults attending with them, and all volunteer staffers — must be registered to attend Peterloon.

Registration closed on September 15, 2010. There is no on-site registration process.

Saturday only visitors may enter to observe Peterloon but must first check-in at the entrance gate. **Only registered or checked-in people will be permitted to enter Peterloon.**

Troops & Crews

Boy Scouts and Venturers of all ages are invited to attend Peterloon 2010. All Councils from anywhere in the Scouting world are eligible to attend and are invited. In years past we have had the privilege of hosting Scouts from Canada and Israel and would love to entertain more Scouts from these and other parts of the world.

Webelos

There are no differences in activities or procedures for Webelos 1 vs. Webelos 2. All Webelos Scouts will be treated the same at Peterloon. Webelos may register in one of two ways.

1. Webelos wanting to camp overnight must register with a Boy Scout Troop which will act as your host. Host troops should preferably be a troop with which your Pack is already affiliated. You can camp both Friday and Saturday nights with your host troop!
2. Alternatively, Webelos not camping with a troop may attend for Saturday during the day only but still must register with your host troop (although at a reduced fee). There is no need from Council's perspective to list the Saturday only adults accompanying these Webelos since these adults are being admitted for free and will not receive any free patches. They will, however, have to sign-in and obtain a wrist band upon arrival Saturday before being allowed to enter the camporee.

Webelos Dens need to provide their own leadership to attend and should not depend on their host Scout Troop. The Webelos Den leadership should also be responsible for making sure proper health forms are collected for their dens.

The Guide to Safe Scouting rules should be followed for sleeping arrangements. *"...no youth may stay in a tent with an adult who is not their Parent or Guardian."*

PETERLOON 2010

"Achievements of the Past – Foundations for the Future"

Webelos leaders and Scoutmasters are responsible for making arrangements for transportation, menu planning, and cooking. Webelos and their leaders must arrange to have meals with the host troop or plan to provide your own meals.

They are also responsible for completing combined Peterloon registration forms for both units, which must be filed together, to include an accurate count of the number of Webelos Scouts, Boy Scouts, and adults who will be camping overnight. This count is needed to plan adequately-sized campsites.

If you don't know a troop, attend your district's roundtables. In the Dan Beard Council roundtables, Peterloon Chairs and Scoutmasters will be present to meet with you and help you select a host troop for Peterloon.

Check out our **Webelos FAQ** page at <http://www.peterloon.danbeard.org/Webelos-FAQ.htm> for more details.

Unit Volunteers Needed

To adequately staff all Peterloon activities, hundreds of volunteers will be needed.

- We are asking each unit to volunteer two adults on Saturday to work 4 hours each. They will be working in the Food Court area, Action Center, or some other needed area. This will be in addition to any staffing needs a unit or district may have to manage and run its own events or any members a unit may have on any of the standing Peterloon Committees. These unit volunteers' names will be placed in a pool for assignment as needed to help run the many functions and activities of the overall encampment.
- Use the Unit Volunteer Application form in the back of this Guide (and also available [on-line at http://www.peterloon.danbeard.org/PDFs/Vol-Sheet-P2010-FIB.pdf](http://www.peterloon.danbeard.org/PDFs/Vol-Sheet-P2010-FIB.pdf)) to sign up for the four hours on Saturday. Each unit should submit this form designating two unit volunteers with your unit registration by **Sept. 15, 2010** so we can plan for the volunteer assignments required.
- All volunteers must be registered with your unit, even if they plan to arrive on Saturday.
- Staff and volunteers who work at least 4 hours will receive a Peterloon official collector's staff gift as a means of recognition and in appreciation for their service.

For more information about what's involved with the various volunteer jobs and other information about how you and your unit's parents can help, contact Tim Carter, Peterloon volunteer coordinator, at (513) 481-7791 or by email volunteer@peterloon.danbeard.org.

PETERLOON 2010

“Achievements of the Past – Foundations for the Future”

Registration

All participants must be registered to attend Peterloon. This includes Boy Scouts, Venturers, Webelos, adult leaders, other adults attending with them, and the volunteer staffers.

Saturday only visitors may enter to observe Peterloon but must first check-in at the entrance gate. Only registered or checked-in people will be permitted to enter Peterloon.

Forms:

You must include the following forms with your registration by the registration deadline of **Sept. 15, 2010** (discount deadline is **Aug. 15, 2010**):

- **Registration Form:**
 - a. you may Register On-Line at <http://secure.danbeard.org/registration/calendar/detail.asp?ActivityKey=739054>
 - b. or complete the Manual Registration Form in the back of this Guide and send it to:
Dan Beard Council, BSA
10078 Reading Rd
Cincinnati, OH 45241
- If you use the Manual Registration Form above, please include a completed **Unit Roster**, which you can find located in the back of this Guide and also available on-line at <http://peterloon.danbeard.org/PDFs/Unit-Roster-P2010.pdf>
- **Unit Volunteer Application** -- Two Unit Volunteers are needed from EVERY unit for four hour shifts each. The available shifts are:
Sat. AM (8:30 - 12:30)
Sat. PM (12:00 - 4:00)

Please enter their names on the Unit Volunteer Form form located in the back of this Guide and also available on-line at <http://peterloon.danbeard.org/PDFs/Vol-Sheet-P2010.pdf>

Tour permits are not required for units within the Dan Beard Council.

Units from outside of Dan Beard Council are required to bring a tour permit.

The links below are provided for your convenience.

- National Tour Permit Application (over 500 miles & out of Dan Beard Council)
- also available on-line at <http://danbeard.org/pdf/General/NtlTour.pdf>
- Local Tour Permit Application (under 500 miles & out of Dan Beard Council)
- also available on-line at <http://danbeard.org/pdf/General/LocalTour.pdf>

Also the unit leader at Peterloon must have in his/her possession a completed copy of the new **BSA Annual Health and Medical Record Form** for each youth and adult participant. This form became effective 1/1/2010. Parts A & C of the form are to be completed for anyone regardless of age whenever the duration of an event is less than 72 hours and there are adequate medical services available, as is the case at Peterloon. Part B of the form (physical exams by a physician) are not required for Peterloon participants. The form is available on-line at <http://danbeard.org/pdf/annualhealth.pdf>

PETERLOON 2010

“Achievements of the Past – Foundations for the Future”

Cost:

Costs shown are per person.

Category	Registration Received by 8/15/2010	Registration Received between 8/16/10 - 9/15/10
In Council	\$16	\$19
Out of Council	\$16	\$19
Webelos camping with host troop *	\$16	\$19
Webelos attending Saturday ONLY	\$9	\$12
Den Leaders / Adults visiting with Webelos on Saturday Only **	No Charge	No Charge
T-shirts (not included in registrations, costs are extra)	\$6.00 for S, M, L, XL \$8.00 for XXL \$9.00 for XXXL \$10.00 for XXXXL	
<p>All T-Shirts must be ordered by 9/15/2010 to get the prices shown above. After 9/15/2010, T-shirt orders are FINAL No Refunds or Exchanges at the event. If you want to buy additional T-Shirts at Peterloon, they will cost \$4 more each over the prices shown above.</p>		

EACH PAID REGISTERED PETERLOON PARTICIPANT WILL RECEIVE:

- Guidebook (with map and schedule)
- Peterloon 2010 patch
- To keep costs down, you will NOT receive a free official Peterloon 2010 T-shirt with the standard registration fee. However, You will have the option of preordering T-shirts by size for those wanting them by pre-ordering them on the separate [T-Shirt Order Form](http://peterloon.danbeard.org/PDFs/T-Shirt-Order-Form.pdf) at <http://peterloon.danbeard.org/PDFs/T-Shirt-Order-Form.pdf>

* All registered Webelos Scouts will be admitted to participate in events designed especially for them and to participate where appropriate in other events designed for the older Scouts. **There is no limit to the number of Webelos or leaders who can register.**

** No unregistered Webelos, Boy Scouts, Venturers, or leaders will be admitted.

Adults accompanying Webelos Scouts on Saturday will be admitted free, but their admission does not include the Peterloon 2010 official collector's patch. Souvenirs will be available for purchase at trading posts in camp.

Your registration fees also help pay for event insurance, program supplies, and the Saturday activities including the Action Center exhibitors and Saturday night's new and enhanced Arena Show.

Advance registration is required to attend Peterloon 2010! Due to limited parking, each troop will receive by mail two cargo vehicle passes to enter the Peterloon campsite for unloading only. Due to

PETERLOON 2010

“Achievements of the Past – Foundations for the Future”

reductions in the amount of camping space available in the fields, there will be no vehicle parking in the fields after unloading.

Registration must be received by **September 15, 2010**. This will allow for mail delivery of your cargo vehicle passes, campsite assignments (remember campsite assignments will be issued based on order of registration, so be sure to register early), and other Peterloon registration information. Only cargo vehicles with passes will be admitted to the Peterloon campsite and for unloading purposes only. After unloading they must park in the remote parking area with all other vehicles. No exceptions!

Your unit will receive its campsite space allocation based on the number of people pre-registered with their deposit on record at the Dan Beard Council Service Center by close of business, Friday, September 15, 2010. **No registrations will be accepted after September 15, 2010.**

Registration this year is first-register-first-camp site. We are camping Jamboree style and not by districts. This will provide your Scouts the opportunity to encounter other Scouts from other Districts in Dan Beard Council and from other Councils.

Individuals or groups who cancel a program reservation 60 days prior to the date of the event will receive a refund of fees paid less 20 percent administration charge. No refunds made after the 60-day cancellation deadline.

Payment:

Make checks payable in U.S. funds to:

Dan Beard Council, BSA, for Peterloon, account # 6801-052.

Mail check with registration form to:

Peterloon 2010

Dan Beard Council, Boy Scouts of America

10078 Reading Rd.

Cincinnati, Ohio 45241

We look forward to seeing you there!

PETERLOON 2010

“Achievements of the Past – Foundations for the Future”

Check In on Friday

Before your troop departs for Peterloon from your home community, finalize your Unit Roster for check-in, load all gear into cargo hauling vehicles, and load Scouts into passenger vehicles.

Vehicle passes — Each troop that pre-registers will be issued two vehicle passes for cargo hauling vehicles to enter your Peterloon campsite. Only cargo hauling vehicles displaying authorized vehicle passes will be admitted into the Peterloon campsite area at Cub World. After unloading they must be driven to the remote Peterloon parking area. Due to new conservancy issues, there will be no parking in the camping fields this year.

Where to go — Passenger vehicles are to proceed to the designated off-site parking area for unloading (see map on page 15). Scouts and leaders not riding in cargo hauling vehicles will board a shuttle bus there to take you to the Peterloon campsite.

- Make sure your Scouts know your Sub-Camp area (1, 2, 3, 4, or 5). Maps will be available on the buses to remind Scouts of Sub-Camp locations.
- Registration by the Sept. 15 deadline will ensure smooth check-in.

Locating your campsite —Your unit will be assigned a campsite in one of the five Sub-Camps. You'll receive information about your campsite by mail after you've registered your unit. When you arrive, look for your Sub-Camp HQ for additional information.

Each Sub-Camp is assigned a number between 1 and 5. As you enter the Peterloon camping area and come to the "Y" in the road, those in Sub-Camp 1 will go to the right and follow the signs into your Sub-Camp. All others will go to the left and look for the number of their Sub-Camp along the road.

When you arrive at your Sub-Camp, pull off to the right and look for guides who will provide maps showing your campsite location.

Your campsite identification number will consist of the following:

- A number between 1 and 5 indicating the number of your Sub-Camp.
- A letter between A and E indicating the name of the aisle you should turn into in your Sub-Camp.
- A hyphen separating the Aisle ID from your specific Campsite ID.
- A number between 01 and 20 indicating the number of your campsite on the aisle. Odd numbered campsites will be on your left, and even numbered campsites will be on your right as you drive up the aisle toward the river.
- Example, 2A-05 will be the 3rd campsite on your left in the first aisle in Sub-Camp 2.

Please try to clear the entrance road as quickly as possible and keep the traffic moving. Friday evening can be very slow and congested otherwise.

We strongly encourage units to arrive on Thursday anytime after 12:00 noon and locate and set up your campsites early. Your District Sub Camp Commissioners should have guides waiting to help you then. Check with them to make sure.

Only vehicles with official vehicle tags will be allowed to enter the Peterloon encampment area on Friday.

Once you unload your vehicles and drop any trailers you may have, please continue driving toward the river, turn right, and follow the exit road signs to leave camp. Due to reduced space this year, no vehicles will be allowed to remain parked in the camping fields.

PETERLOON 2010

“Achievements of the Past – Foundations for the Future”

Unloading your gear — To unload cargo-hauling vehicles, go to your assigned Sub-Camp. Every driver needs to know his or her Sub-Camp Number (1,2,3,4, or 5) in order to find your assigned camping area. Follow the guides and signs to your Sub-Camp's location.

Check-In — Check in with Area Staff at Sub-Camp HQ. Have your completed [Unit Roster](#) with you. (You can use the Unit Roster Form in the back of this Leaders Guide.) Peterloon staff will direct you to your campsite including indicating boundaries, latrines, water, and other details you'll need for setting up.

Wrist Bands — Your registration packet when you check-in will include colored wrist bands for each Scout attending Peterloon with you. All Boy Scouts and Venturers will wear one color, and all Webelos will wear a different color. In addition, those Scouts participating in the Amazing Race will receive a third color, so those Scouts will wear two different colored wrist bands. Additional wrist band colors will be issued to those registered for the Rappelling event and others for all walk-in youth or adults. The wrist bands are required for admission to Peterloon and must be worn all weekend. Replacements will not be issued.

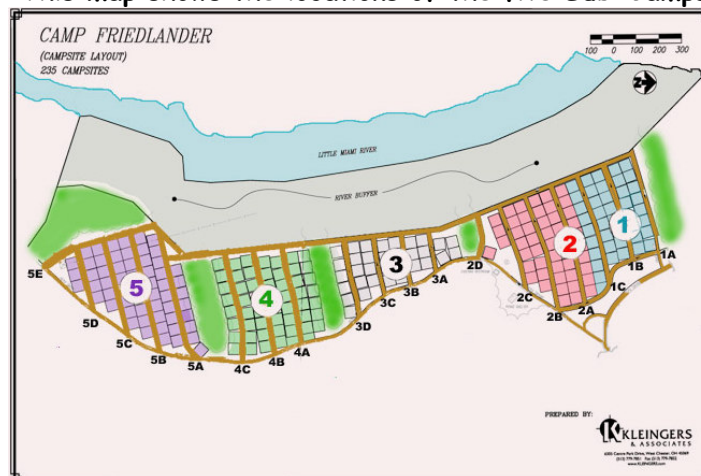
Cargo vehicles — Must be moved to the designated parking area in the off-site parking area immediately after unloading. Do not wait until later to move your vehicle. All vehicles must be out of your campsite by 9 p.m. Friday.

Sub-Camps

Here is the list of **Sub-Camps** and **Sub-Camp Commissioners**:

SUB-CAMP	SUPPORTING DISTRICT	SUB-CAMP COMMISSIONER	EMAIL	PHONE
1	Maketewa	Mike Ehler	michaelehler@gmail.com	859-317-0244 (m)
2	W.H.Harrison	Bill Wieland	WJWieland@cinci.rr.com	513-884-2119 (m)
3	Ft. Hamilton	Brian Griffin	bgriffin@cinci.rr.com	513 608-0033 (m)
4	Hopewell	Scott Douglass	sedoug@fuse.net	513-459-1547 (h)
5	Blue Jacket	Lee Carmichael	dougcarmichael@netzero.com	513 582-2017 (m)

This map shows the locations of the five Sub-Camps



PETERLOON 2010

“Achievements of the Past – Foundations for the Future”

Early Arrivals for Set-Up

If you want to set up camp before 2 p.m. Friday

- The Peterloon site opens officially at **2 p.m. on Friday, Oct. 15**. Units wishing to set up their campsite prior to that time may do so with permission of the Peterloon Campsite Chair (see name and contact information below).
- Only cargo vehicles with permits will be admitted to the Peterloon site.
- No unit will be allowed to set up prior to **noon Thursday, Oct. 14**.
- Early arrivals on Thursday can set up their campsites and may camp overnight if they wish so long as there is appropriate adult supervision on site.
- To arrange early arrival and set-up, contact **Hal Wood**, the **Peterloon Campsite Chair**, by email at camp@peterloon.danbeard.org or by phone at 513.509.1525, no later than **9:00 p.m., Tuesday, Oct. 5**.

Late Arrivals on Friday Night

If you have parents delivering Scouts to Peterloon after football games or other activities on Friday night, be sure to direct them to the remote parking area off Wards Corner Road so Scouts can board the shuttle bus, which will run to the Peterloon site until **10:45 p.m.**

No cars will be admitted at gates of Dan Beard Scout Reservation without a permit, so tell parents to take Scouts to the parking area off Wards Corner Road just south of the I-275 exit.

SEE PARKING PLAN and SHUTTLE SCHEDULE

After 10:45 p.m. Friday, parents will have to drop off late arrivals at the Peterloon entrance (Lower Craig Cub World Entrance of the Dan Beard Scout Reservation) located at 6035 Price Rd.

No vehicles will be admitted, however, so remind your Scouts that they will have to carry in their gear. Remind them also to bring a flashlight, and be sure they know their unit number and the Sub-Camp (1,2,3,4, or 5) where your unit is staying.

Setting Up Your Campsite

General guidelines for setting up your campsite.

- Do not block access road with vehicles or gear.
- Patrols/Troops set up camp.
- Set up dining fly first - put gear under it to protect from weather.
- Set up tents - then move personal gear into tents. Lay out sleeping gear.
- Set up cooking and eating area, secure water and fuel supply.
- Remember no ground fires. ALL fires need to be off the ground.
- Due to Green Ash Borer control policies, all firewood needs to be obtained from within Clermont County. See the list of available firewood distributors on the next page.
- Last thing up is Gateway, if you choose to have a gateway.

PETERLOON 2010

“Achievements of the Past – Foundations for the Future”

Firewood Suppliers - Clermont County



Because of the spread of the invasive Emerald Ash Borer, the US Forestry Department and the Ohio Department of Natural Resources have regulated the transportation of firewood across state and county lines. Since Peterloon will be held in Clermont County, all firewood being brought into Peterloon must be purchased in Clermont County. You can read more details at Dan Beard Council's Firewood Policy Page at http://www.danbeard.org/pdf/camping/Camp_Firewood_Policy.pdf.

If you wish to buy firewood in Clermont County to burn at Peterloon 2010, here are some places there that sell it:

<p>Cobb Firewood Bill Cobb, Owner 5858 Monassas Run Rd. Milford, OH 45150 (513) 575-5446 (513) 615-8772 (cell) williamcobb@fuse.net (call ahead to arrange quantity & delivery)</p>	<p>Meijer at 1082 State Rt. 28 Milford, OH 45150 (3.5 miles from camp) (513) 576-5500</p>
<p>Krogers at 6388 Branch Hill Guinea Pike at Loveland-Miamiville Rd. (1.5 miles from camp) (513) 697-4800</p>	<p>Miamiville Firewood Sam Latham, Owner 349 Center St. Miamiville, OH 45147 (513) 248-8669</p>
<p>Mark Shinkle 1414 Zimmer Rd Williamsburg, OH 45176 (513) 724-1564 (will deliver)</p>	<p>Zinzinnati Tree 497 Massey Ct. Miami Township 45255 (513) 683-8133 (call first, they have various staging lots)</p>

Note: While some of these vendors say they will deliver, please be advised they will not be allowed into the camp after 12:00 noon on Friday, Oct. 15.

If you do arrange for any delivery after that time, you will need to meet them yourself at the camp entrance and transport the firewood to your campsite yourselves as there will be no drop off, storage, or delivery service available from the rangers.

You may wish to pick up your firewood from the suppliers at their work places and bring it in with you when you arrive.

PETERLOON 2010

"Achievements of the Past – Foundations for the Future"

Check Out on Sunday

All units are asked to follow the "Leave No Trace" camping guidelines. Campsites must be clean enough for camp rangers to be able to cut grass without having to get off tractors and remove objects.

Place rocks, logs, and natural debris outside of the camping fields and three feet into the tree line or other uncut areas.

More about "Leave No Trace" on the Web at:

www.scouting.org

www.LNT.org

All units must police their campsite and dispose of bagged trash properly. Dumpsters will be provided at each Sub-Camp HQ. No trash is to be left in the Peterloon fields, and please do not pile trash on the sides of the dumpsters.

Sub-Camp staff will inspect campsites before releasing units. **Inspections begin after religious services are over (*A Scout is Reverent!*)**. Alert the staff at Sub-Camp HQ when you are ready for inspection.

Sub-Camp staff will hold Peterloon patches and ribbons until campsites are clean and unit is ready to leave.

IMPORTANT - Only cargo vehicles with permits will be allowed to enter the Sub-Camps to load gear.

This is for the safety of the Peterloon participants and to ensure that traffic congestion is kept to a minimum so that units can pack up and leave smoothly Sunday.

Out of respect for the religious services being conducted Sunday morning, no cargo vehicles will be permitted to enter Peterloon until after 10:00 a.m. Sunday.

Make sure your cargo vehicle drivers are aware of this.

We apologize for any inconvenience this may cause, but with more than 5,000 participants on the Peterloon site, all internal camp roads will be closed to ensure safety.

Hospitality Area for Adults

LEADERS, TAKE A BREAK AND SAY "HELLO"

Peterloon HQ (Cub World Administration Building)

Open 9 a.m. to 5 p.m. Saturday for adult leaders only.

Stop by for coffee, hot tea, hot chocolate, and a chance to meet other adult leaders and renew old friendships.

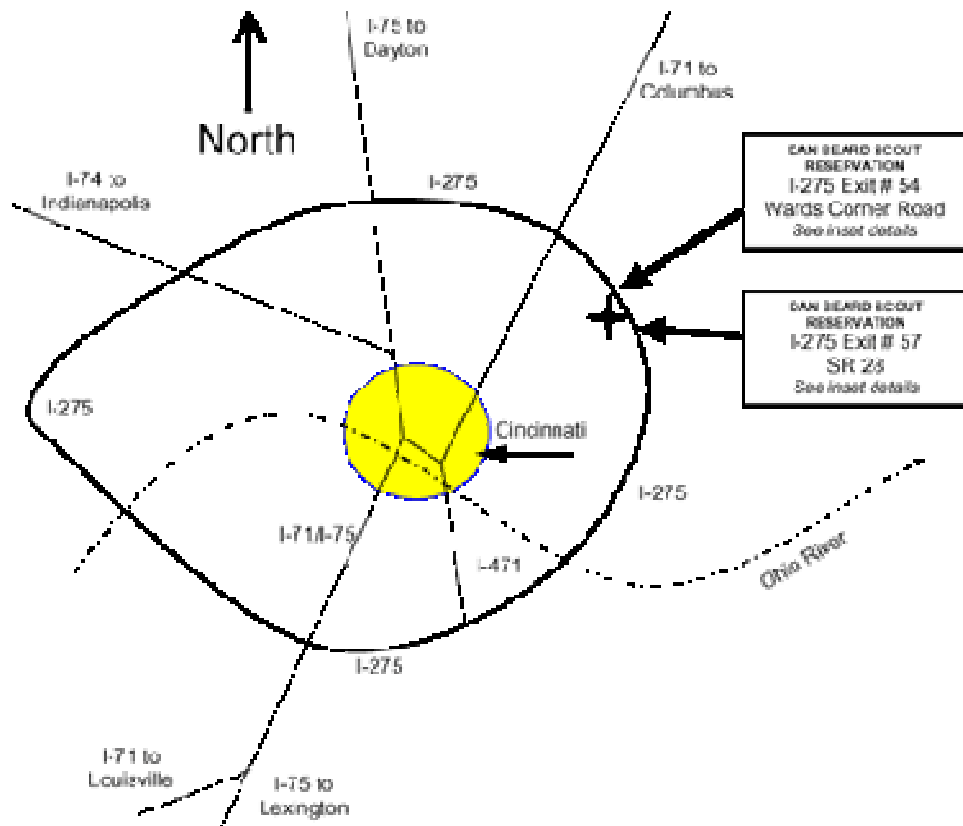
PETERLOON 2010

"Achievements of the Past – Foundations for the Future"

Maps & Driving Directions

Peterloon 2010 will be held in Camp Lower Craig (also known as "Cub Scout Adventure World") at the Dan Beard Scout Reservation located in the northeast quadrant of Cincinnati just off I-275. The address is 6035 Price Road, Loveland, Ohio 45140

Map -- Driving Directions



The Dan Beard Scout Reservation is located northeast of Cincinnati off I-275 between the towns of Loveland and Milford, Ohio.

There are three entrances to the reservation:

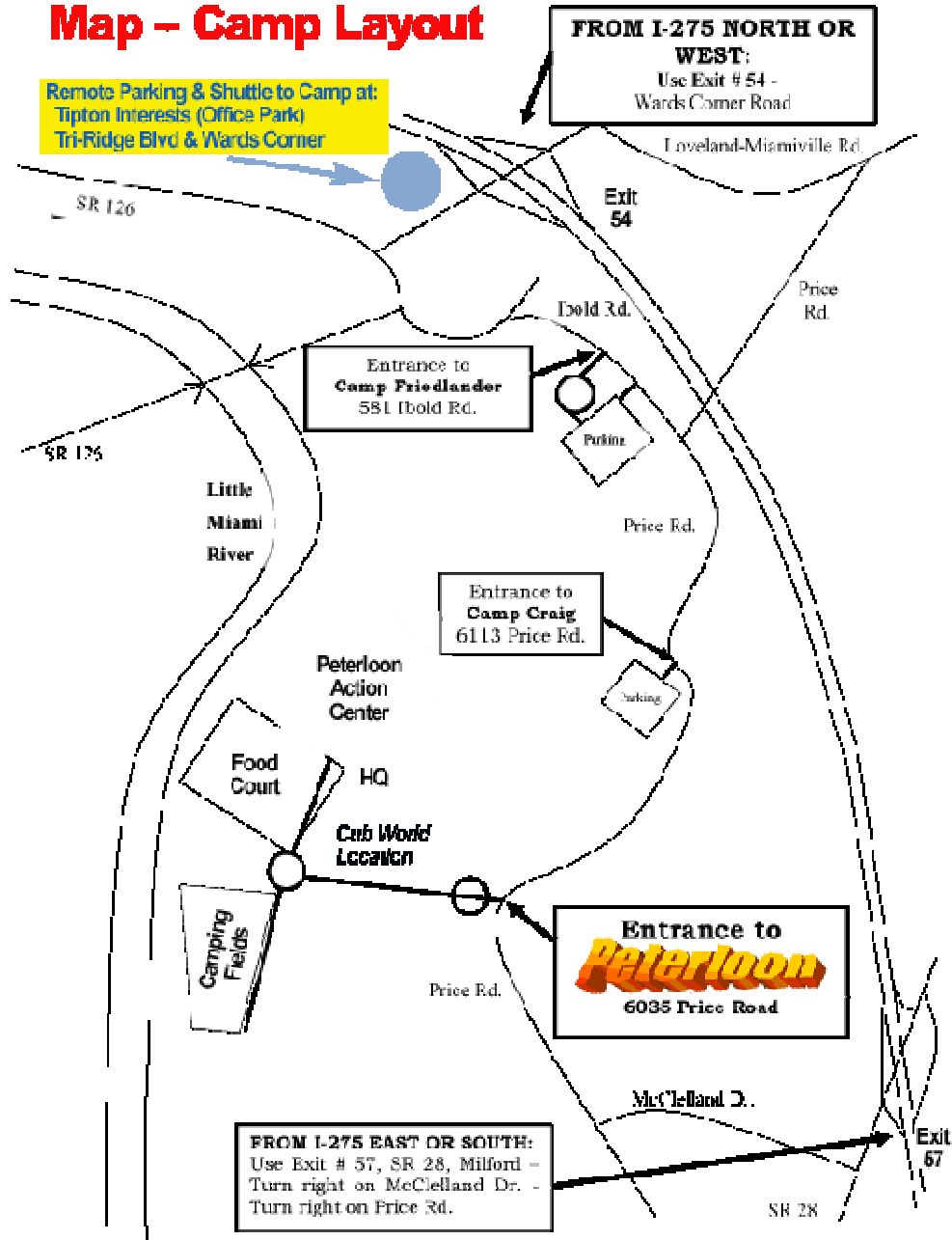
1. **Camp Friedlander** - 581 Bold Rd. - Phone 513-831-8311 - Fax 513-831-8475 (main camp)
2. **Camp Upper Craig** - 6113 Pike Rd. - Phone 513-248-8895 (staffed only during summer)
3. **Camp Lower Craig** - 6035 Price Rd. - (site for Peterloons 2008) & **Cub Scout Adventure World** - Phone 513-248-2211 - Fax 513-248-2527 (staffed only during summer)

All Camp addresses are Loveland, Ohio 45140
**VISITORS TO CAMP MUST FILE A USE OF CAMP APPLICATION AT THE SCOUT CENTER
 NO LESS THAN 72 HOURS PRIOR TO ARRIVAL**

PETERLOON 2010
"Achievements of the Past – Foundations for the Future"

To drive directly to the camp, from I-275 take either:
Exit #54 (Wards Corner Rd.) or
Exit #57 (SR 28)

Map – Camp Layout



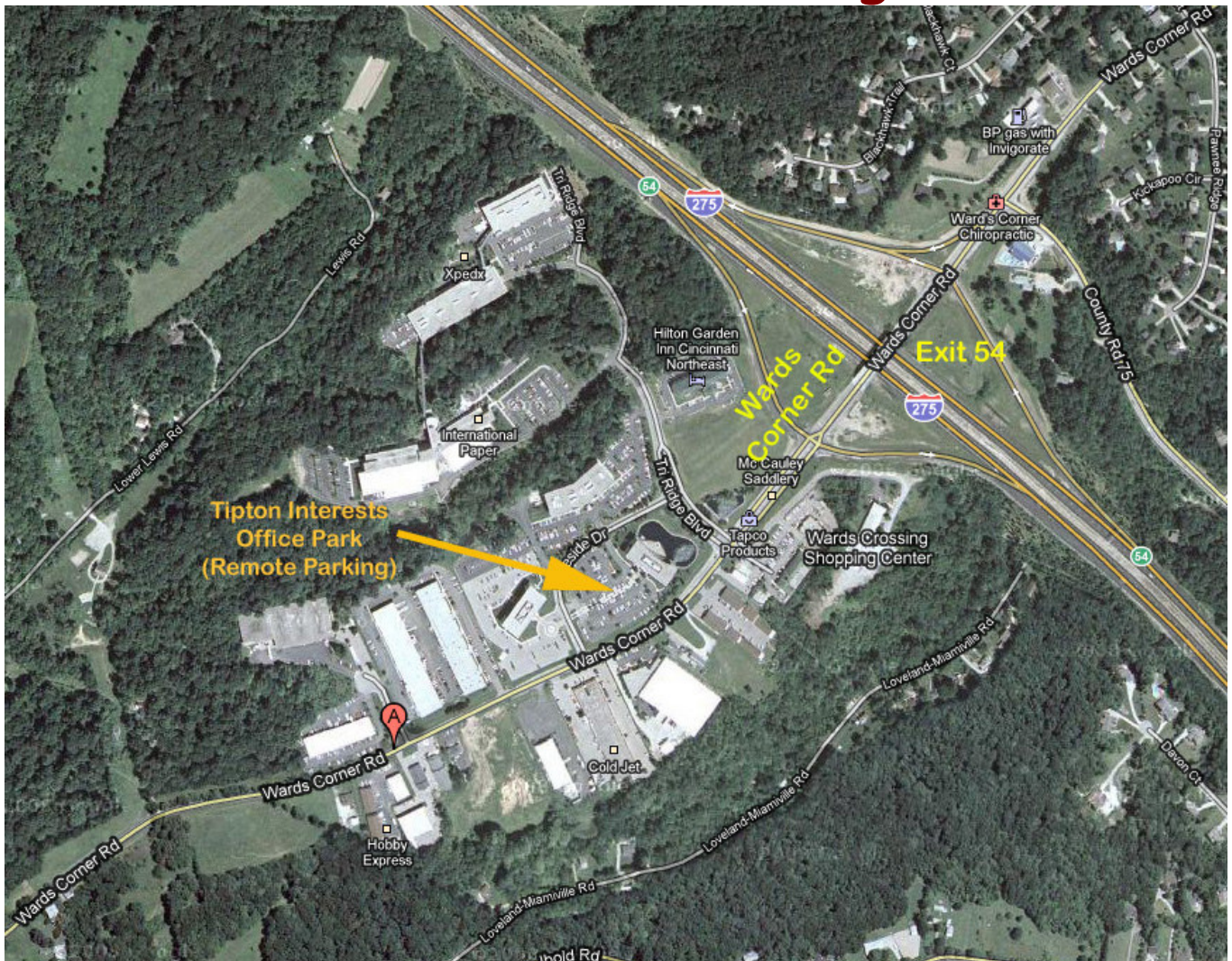
See the **remote parking** and **shuttle service** pages for details on using the remote parking facilities.

Satellite View



PETERLOON 2010
“Achievements of the Past – Foundations for the Future”

Peterloon Remote Parking Area



Note: All Participants will park in the remote parking area (including cargo vehicles after unloading):

Location: Tipton Interests, Inc (office park)
Wards Corner & Tri-Ridge Blvd.
Cincinnati, Ohio

Note: Tipton Interests is providing this remote parking area at no charge to the Dan Beard Council. Please respect their property.

Directions: I-275 to Exit 54 (Wards Corner Road)
Turn South onto Wards Corner Road
Proceed to Peterloon parking lot on the right
The stone sign at the entrance says "Wards Corner - Tipton Interests Inc."
The parking lot staff will direct you to available parking spaces.
DO NOT park in any space that has a traffic cone

PETERLOON 2010

"Achievements of the Past – Foundations for the Future"

Parking Tips:

To make your travel to Peterloon and parking more enjoyable, follow these tips:

- Arrive before or after the highest peak time - most people arrive between 5 PM and 8PM on Friday.
- Arrange to have gear brought to the camp in a vehicle with a cargo vehicle pass.
- Consider carpooling with another Scout

If any Scouts need to leave camp for another event, arrange to meet them at the remote Peterloon parking area shown on the previous page. No vehicles will be allowed into the Peterloon site between 9:00 pm Friday and 10:00 am Sunday. Any vehicles desiring to access the Peterloon site during authorized entry hours must have a permit.

GENERAL DRIVING DIRECTIONS TO THE CAMP

<p>Directions from the East on I-275:</p> <ul style="list-style-type: none"> • Follow I-275 West to the Blanchester- Milford Route 28 exit (exit #57). • Turn left off the exit ramp onto State Route 28 and merge into the far right lane. • Cross over the highway and go through one stoplight. • At the second light, make a right onto McClellan Drive. • At the stop sign, make a right onto Price Road. Follow Price Road, and the flashing "Camp Entrance" sign at the bottom of the hill will indicate that the entrance Cub World will be on the left. 	<p>Directions from the West on I-275:</p> <ul style="list-style-type: none"> • Follow I-275 East to the Ward's Corner Road exit (exit #54). • Turn left off the exit ramp onto Wards Corner Road and merge into the far right lane. • Cross over I-275 and go through one stoplight. • Make the first right onto Loveland-Miamiville Rd. • Turn right onto Price Road. • Follow Price Road across I-275 and make a left at the stop sign to continue on Price Road. • Go past Camp Craig; the flashing "Camp Entrance" sign at the bottom of the hill will indicate the Cub World entrance on the right.
--	--

Shuttle Service & Schedule

Friday - Shuttle hours are from 2:00 PM to 10:45 PM. Buses will run between the remote Peterloon parking lot and the Peterloon campsite. Parking coordinators will direct you to a parking space where you will be able to board the shuttle to Peterloon. See Remote Parking Lot maps on pages 15 & 16.

Saturday Morning - Shuttles will run all morning beginning at 7:00 AM from the remote Peterloon parking lot to the Peterloon campsite. Parking coordinators will direct you to a parking space where you can then board the shuttle to Peterloon. See Remote Parking Lot maps on pages 15 & 16. These shuttles will also be available for those who need to leave Peterloon for another event and then return later in the day.

Saturday Afternoon - Shuttles will run all afternoon for those who need to leave and return later in the day or for those who choose to leave after the Action Center closes (around 4:30 PM).

Saturday Evening - Shuttles will run until 11:00 PM for those who choose to leave after the Arena Show (around 10:00 PM).

Sunday Morning - Shuttles will pick up at the Peterloon campsite and drop off in the remote Peterloon parking lot. The shuttles will run from 10:00 AM until everyone has been returned to the remote parking lot.

PETERLOON 2010

"Achievements of the Past – Foundations for the Future"

Vehicles

Passes are required to enter Peterloon campsite

To ensure the safety of participants and ease traffic congestion at Peterloon, the following vehicle plan has been developed:

- Each unit that registers by Sept. 15 will be mailed 2 cargo vehicle passes that will allow the unit to haul their equipment into the Peterloon campsite.
- The requirements for vehicles to display passes to enter Peterloon will begin at 2:00 PM on Friday, Oct. 15, 2010.
- With the 2 cargo vehicle passes, troops will receive their Sub-Camp assignment. Make sure you share with all Scouts and leaders your assigned Sub-Camp and campsite location.
- Vehicles hauling passengers only will be routed to the Peterloon remote parking area off Wards Corner Road near exit #54 from I-275. From there, shuttle buses will transport you to the Peterloon campsite.
- Troop trailers will be allowed into the campsite, and may remain parked at the campsite. The towing vehicle must have a cargo vehicle pass and must be moved to the Peterloon remote parking lot near the intersection of Wards Corner and I-275 immediately after unloading. (see Peterloon Remote Parking Maps on pages 15 & 16). No cargo vehicles will be allowed to remain in the Peterloon camping fields.
- There will be no traffic on the Peterloon site roads after 9:00 p.m. on Friday, and out of respect for the 12th Law of Scouting there will be no cargo vehicle access until 10:00 Sunday morning. (Exception: emergency traffic and support vehicles necessary to the operation of Peterloon, First Aid or other special needs.)

Special needs passes

- Individuals with disabilities may apply to Dan Beard Council for a "Special Needs Vehicle Pass" to park at the troop campsite. Written certification from a licensed physician will be required in order to have a "Special Needs Pass" approved by the Peterloon committee. You must request a "Special Needs Pass" application with your registration by Sept. 15. Applications for Special Needs Passes will not be accepted after Sept. 15.

Action Center

Open 9 a.m. to 4:30 p.m. Saturday

This is the place to be on Saturday to test your skills, learn new ones, see interesting and educational exhibits, and just have fun.

For Peterloon 2010, a number of events will be presented by Scouting Districts from both in and out of Council for Boy Scouts, Venturers, and Webelos to test their skills and learn new capabilities. They are identified on the next page. Many will focus on learning teamwork and developing leadership skills. All will be fun!

A key new event this year is the **Amazing Race**. Our traditional Peterloon classic, the Simon Kenton Relay, has been re-organized into a grander event called the Amazing Race. It will include a much larger competition area, namely the entire Dan Beard Scout Reservation. Patrols will be challenged with several skill and puzzle stations along their trek. Planned and operated by the Order of the Arrow Ku-Ni-Eh Lodge, this will be an exciting program for Scouts, and Venturers of every age. Does your patrol have what it takes to win the Amazing Race?

In addition to the events there will be a number of exhibits and demonstrations presented by Council Scouting Groups, Community Organizations, and Corporate Partners ranging from static displays to hands-on activities for all to enjoy. These exhibits provide alternate opportunities to enhance the Scouts' experiences in addition to the events but are not intended to replace the Action Center experience.

A complete list of exhibitors and their locations will be included in an information packet provided during check-in on Friday, October 15th.

Displays and Activities

The displays and activities will be open 9:00 a.m. to 4:30 p.m. on Saturday to all Scouts registered for Peterloon.

District Hosted Events

The activities below are planned for Peterloo Scouts' enjoyment and competitions by the following Districts of the Dan Beard Council, by a special Venturing Team, and by several units coming from outside the Dan Beard Council area.

Dave Olmstead is managing overall coordination of the Action Center Programs and Events.

ACTIVITIES	Coordinators	ACTIVITIES)	Coordinators
<u>Blue Jacket District Activities</u> 1. Rescue Toss 2. Log Saw & Branding 3. Cow Patty Toss ----- Webelos Coordinator 4. Kim's Game	<u>Brian Mette</u> Steve Ditty Wanda Leaman Mike Cisneros ----- Mary Ann Mette	<u>Maketewah District Activities</u> 1. Ping Pong Plop 2. Relay Game 3. Minute to Win It ----- Webelos Coordinator 4. Scout Law Carry	<u>Mike Ehler</u> Chris Sauer Jeff Sweeney Steve Culver ----- Dave Andersen
<u>Ft. Hamilton District Activities</u> 1. Archery 2. BB Guns 3. Walking On Air ----- Webelos Coordinator 4. Trebuchet	<u>Jerry Oberlag</u> Dan Lintz Terry Dalrymple Charlie Garrison ----- Dale Gibbemeyer	<u>Trailblazer District Activities</u> 1. Semaphore 2. Rope Pulley Bucket 3. Stepping Stones ----- Webelos Coordinator 4. Relay Race	<u>Mark Barth</u> Tom Hampel Brad Goeke Doug Eifert ----- Scott Conradi
<u>Hopewell District Activities</u> 1. Orienteering - Past 2. Orienteering - Present 3. Orienteering - Future ----- Webelos Coordinator 4. Catapult	<u>Rick Hauser</u> Bob Carey Andrew Weller Jeff Webb ----- Brian Aldrich	<u>U.S. Grant District Activities</u> 1. Logic Puzzle 2. Bridge Building Puzzle 3. Geo Cache ----- Webelos Coordinator 4. Knot Tying Event	<u>Jeff Neal</u> _____ _____ _____ _____
<u>Hopkins District Activities</u> 1. _____ 2. _____ 3. _____ ----- Webelos Coordinator 4. _____	_____ _____ _____ _____	<u>W.H.H. District Activities</u> 1. Tomahawks 2. Knives 3. Bull Whips 4. Black Powder ----- Webelos Coordinator 5. Buckskin Games (above)	<u>Bill Wieland</u> Joe Vogerl _____ Charlie Ulrich Charlie Ulrich _____
<u>Venturing Crews Activities</u> 1. Trebuchet w/Cabbages 2. Water Balloon Launcher (Accuracy) 3. Water Bottle Rockets	<u>Cid Ridgeway</u> Barry Akins Don Lakes ----- Chris Tarnowiecky	<u>Out Of Council Sponsored Activities</u> 1. Canoe Portage 2. Crow Arrow 3. Giant Corn Hole	<u>Phil Lambers</u> Paul Williams John Dietsch Paul Andras & Archer Thomas

Test your skills, learn new ones and just have fun!

Exhibits!

Activities!

Events!

The following organizations will present exhibits and displays at our biggest and most entertaining Midway and Exhibit Center near the entrance of the Action Center. This will enhance the experience of all attending Peterloon.

The Boy Scouts want to thank each of these exhibitors for their generous contribution of their time, materials, and funding to support the Peterloon 2010 Camporee and its activities. Their support is a measure of their strong commitment to the youth and to the communities where they reside and operate.

*Our thanks to **Dennis Meyer**, our Exhibits Chair, for all his work in pulling this impressive group together.*

American Discovery Trail

American Heritage Girls

Have you ever watched The Price Is Right show and wanted to play the PLINKO game? Stop by the American Heritage booth on the Midway and play some PLINKO.

Backyard Camp 'n Gear

Ever want to try out some camping gear before purchasing it? Or do you have a temporary need for some outdoor equipment? Come by the Backyard Camp 'n Gear booth and learn of a unique resource for you.

Benchmark Outfitters

Learn what is new in camping gear from one of the city's premier outfitters.

BSA - Advancement

BSA - Camping Committee

BSA - Health & Safety

BSA - High Adventure

BSA - Learning for Life

BSA - Northern Tier

BSA - NYLT

BSA - Order of the Arrow

BSA - Philmont Training Center

BSA - Planned Giving

BSA - PopCorn

BSA - Powderhorn

BSA - Relationships Committee

BSA - Scout Store

BSA - Training Edge

BSA - University of Scouting

BSA - Venturing Committee

BSA - Wood Badge

BSA - WOW

Buckeye Trail

PETERLOON 2010

"Achievements of the Past – Foundations for the Future"

Cincinnati Astronomical Society

Ever see a sunspot or a solar flare? Come to the fort and help the Cincinnati Astronomical Society celebrate its 100th anniversary by viewing solar phenomena.

Cincinnati Cyclones

Test your hockey puck shooting skills at the Cyclone's Slap Shot game.

Cincinnati Museum Center

Need a winter activity that fills the day with exploration and wonderment? Come and visit the Museum Center booth and learn of a whole season of activities for your troop or den.

Cincinnati Nature Center**Cincinnati Park District****Cincinnati Reds****Cincinnati Zoo**

Come to the Fort and see and learn about some of God's wonderful creatures with the Cincinnati Zoo.

Clermont County Sheriff's Office

Come and view the DARE corvette.

Coco Key

Come and visit with one of Cincinnati's finest indoor water parks at Coco Key. Is there a better way to chase the winter blues than a day playing in a water park?

COSI

Learn some fun science facts and see some amazing things while at Peterloon. COSI will be presenting a show on the hour every other hour in the campfire ring. Join us for an amazing time.

Dave & Busters

Come and play Spin to Win at the Dave and Busters booth along the Scout Midway.

Dick's Sporting Goods**Eagle Scout Association**

The Dan Beard Eagle Scout Association exists to inspire Eagle Scouts, regardless of

age or position in life, to celebrate their accomplishments and their talents, compassion and convictions with the world through social interaction, community service and scouting enrichment.

Visit our booth to learn about the activities and service opportunities we offer for your Eagles.

We will also have information about our annual scholarship, awarded to an outstanding Eagle Scout from Dan Beard Council.

Florence Freedom**Gorman Heritage Farm****Hamilton County Parks****High Adventure - Village Mountain Mission****Kentucky Parks & Resources****Kentucky Speedway**

Ever been up close to see and touch an actual NASCAR? Look for the Kentucky Speedway's car within our Activity Fields.

Kings Island**Kodiac****Marengo Cave & Squire Boone Caverns**

Ever sleep in a cave? Come and visit with Marengo Cave to learn of scouting opportunities at Marengo Cave. In addition to Marengo, Squire Boone Caverns will be on site to speak about their unique scout friendly program. Short trip, big fun!

PETERLOON 2010

"Achievements of the Past – Foundations for the Future"

Metro Parks of Butler County

Learn about programs and Scout project opportunities around Butler County.

Muddy Water Equestrian Park

Museum Center

Newport Aquarium

Northern Tier

Ever canoe across lakes; eat off the "trail"? Come and visit the Northern Tier booth. A canoe trek is an event you and your fellow Scouts and Scouters will never forget.

Ohio Department of Natural Resources

Once again we are blessed with the ODNR RV providing air conditioned space highlighting the magnificent opportunities made available to you and your troop or den.

Ohio State Parks

How many of our state parks have you visited? Visit the Ohio State Park booth in the Midway and learn of the excellent programs available.

Rock Quest

Sporty's Pilot Shop

The Beach

Tri-State Search & Rescue

When you are on your way to the Climbing/Repelling tower, stop by the BB 2 range and learn about the adventure of Search & Rescue.

U.S. Bank Arena

Venturepax

Wilderness Voyagers

There is little more thrilling than riding down a river through whitewater. Learn about whitewater rafting opportunities made available to your troop through Wilderness Voyagers.

Winton Woods Riding Center

Arena Show

Peterloon's big event, a new and enhanced Arena Show on Saturday night (sponsored in part by the Ohio National Guard), features entertainment, announcements of competition winners, and some pre-show activities in an activity area open just outside the Arena Show where there will be challenges, games, and interesting activities for you to do.

Admission to the pre-show activities and to the Arena Show is your Scout Class B field uniform. All are invited.

The Pre-Show Activities in the Arena Show area will begin at 6:00 PM, with the main event kicking off at 8:00 PM and finishing in an exciting Laser Show Grand Finale.

- Matt and Dan McKee will return for a repeat engagement as the emcees for the 2010 Arena Show following their wild success as the 2008 emcees.
- A new activity is being organized this year to help celebrate the 100th Anniversary of Scouting, This will be a special **Peterloon All Scout and Scouter Choir**, and we are looking for singers. Are you or are members of your Scout unit in a church choir, school choir, or other chorus? Maybe you just like to sing! Peterloon Program Chairman Dave Olmstead has announced the formation of the first-ever Peterloon all Scout and Scouter Choir. The goal is for this group to come together and lead the encampment in the singing of our National Anthem at the Arena Show on Saturday night of Peterloon 2010. Cub Scouts, Boy Scouts, Venturers, Explorers, and Adult Leaders are welcome to join the fun. Contact Dave Olmstead if you or any other of the Scouts or Scouters in your unit would like to participate.
- If you want to take advantage of the Arena Show Pre-Show Activities and enjoy some tasty treats, stop by the food court for some grub before the show opens.
 - Webelos leaders in particular may want to take advantage of this option if your den is not camping with a troop as there will be ample time and great food available between the end of the activities and the beginning of the show.

Since we know that a Scout is Courteous we should only have to remind Scouts and Leaders that:

- Adults must remain with your Scouts and be responsible for their behavior. Make sure flashlights are kept off during the Arena Show.
- **Laser pointers are not permitted!** Any laser pointer found will be confiscated, and the offending person will be asked to leave the Arena Show.
- Bring plastic tarps to sit on - no chairs allowed.
- Please follow the Leave-No-Trace principles and pick up any trash or other items around you when you leave.

The Arena Show is sponsored in part by:



<http://www.nationalguard.com/>

We thank them for their support!

PETERLOON 2010

“Achievements of the Past – Foundations for the Future”

Competitions

Competitions enable Scouts to show their best creativity and skills and to learn from others Scouts who are demonstrating theirs. This is a fun and educational experience for all and fosters teamwork and achievement.

Emerald Ash Borer ALERT

Due to the migration of the Emerald Ash Borer into the area, a state ban has been placed on moving unfinished wood into or out of any of the counties in southeast Ohio. This means any firewood you wish to use at Peterloon must be obtained in Clermont County, where the camp is located.

In addition, any wood (poles, spars, braces, supports, etc.) used for gateways, fences, camp tools, tentage, hammocks, etc. must be debarked and sealed with varnish or shellac before entering Clermont County or arriving at camp. No barked or unsealed natural wooden materials can be brought in to Peterloon. Items using barked or unsealed wood will unfortunately have to be disqualified from whatever competition they are in.

Gateway Competition

Peterloon is like a National Jamboree, full of color and excitement, and gateways at campsites have always played a big part in this. Showing Scouts from other parts of the country what's unique or interesting about your troop, crew, or home area is a time-honored National Jamboree tradition, and gateways at Peterloon are one of the most visible ways to do that. Allow your imagination to go wild and create your winning gateway.

The theme for Peterloon 2010 is "*Achievements of the Past - Foundations for the Future.*" In keeping with this year's theme, Peterloon 2010's organizers are inviting all troops and crews that participate this year to design their gateways to reflect these concepts. We encourage you to do this in very creative and novel ways. This is an excellent opportunity to show your Scout skills, create a one-of-a kind gateway at your campsite, and enter it in the Saturday competition. The winners will be announced during the Saturday evening Arena Show.

Judging will be based on the following guidelines:

1. There will be no height or width limitations, but gateways must be erected within the boundaries of your unit's campsite. Campsite frontage will be approximately 50 feet.
2. Gateways must be erected at the unit's campsite. They cannot be preassembled elsewhere and transported to the Peterloon site. Pre-cutting is OK before arrival.
3. Gateways must be constructed of primarily natural materials. No dimensional lumber or processed wood products. (See above alert regarding Emerald Ash Borer constraints.)
4. Also, all wood used must meet the Emerald Ash Borer control procedures shown above.
5. Gateways must include a sign displaying the troop or crew number.
6. Campsite frontage area must have a fence using a combination of rope and wood. The fence must be erected and not merely lying on the ground. The fence will be considered as part of a unit's gateway for judging purposes.

PETERLOON 2010

"Achievements of the Past – Foundations for the Future"

7. Gateways may be erected immediately upon arrival at the Peterloon site.
8. No adults may work on the gateways. Any adult, whether a unit leader or a parent, working on gateways will disqualify his/her troop or crew. However, adults must be present during gateway set-up and removal to supervise and make sure that all Scouts follow safety precautions.
9. No chain saws or power saws of any type are allowed on the Peterloon site. Usage of chain saws or power saws will disqualify the unit from the Gateway competition.
10. American and Unit flags may be incorporated into the gateway but will be judged with the campsite inspection.
11. The gateway should incorporate aspects of your unit's favorite "*Achievements of the Past - Foundations for the Future*" activity.
12. Gateway judging by the Peterloon staff will include, but not be limited to, sturdiness of construction, a working gate or bridge, quality of knots/lashings, skill in building, creativity, safety, and overall appearance.
13. Climbing on the gateways will not be permitted during or after construction. Step ladders must be used where elevated work must take place. Tall structures must be assembled on the ground and then erected. All guide or anchoring ropes must be adorned with multiple visible flags or ribbons. Gateways and flagpoles must be constructed to withstand high winds.
14. Gateway judging will begin at 9:00 A.M. Saturday.

Campsite Competition

Campsites will again be judged by the Peterloon staff, and the units with the best sites will be announced during the Saturday evening Arena Show.

The campsite inspection is conducted to help all Scouts develop a clear sense of individual as well as team responsibility by having them follow a given set of rules and maintaining a tidy, well-organized campsite. This is a challenge for the whole unit and requires the efforts and cooperation of each Scout.

1. Campsites will be judged on overall appearance, layout, organization and cleanliness.
2. Patrol method should be evident.
3. Duty roster and activity schedules should be visible.
4. First Aid kit should be visible.
5. Evidence of neat, clean working kitchen(s).
6. Camp improvements (gadgets) are encouraged. All wood used in camp gadgets must meet the Emerald Ash Borer control policies shown on page 27.
7. A display relating to the unit's favorite "*Achievements of the Past - Foundations for the Future*" activity is encouraged.

Campsite inspections by the Peterloon staff will start at 9:00 A.M. Saturday.

Tug-O-War Competition

One troop or crew will win the Tug-O-War bragging rights for the next 2 years. Put your best team together and compete in Saturday's Peterloon Tug-O-War.

Sign-Up at Sub-Camps Fri. Night or Sat. 9:00-noon; or sign-up at Tug-O-War Area on Sat. from 9:00-noon.

Venturers, no one 18 or older.

Competition 2:00-4:00 pm Sat.

The following Tug-O-War rules will be strictly followed for your safety and to maintain an equal playing field for all.

1. All units (Troops & Crews) participating in Peterloon 2010 may enter the Tug-O-War Competition.
2. Only one (1) team per unit may enter the competition.
3. Teams will consist of a maximum of 8 registered, active youth members of that Troop or Crew (any Crew members must be under 18).
4. Teams must register at their Sub-Camp HQ or at the Tug-O-War area by noon Saturday to participate.
5. Shoes must be worn (tennis shoes or hiking boots). Gloves are optional if you bring your own. No cleated or open toe shoes allowed.
6. All pull-offs will take place at the Tug-O-War area.
7. Format will be single elimination.
8. All participants start by standing straight up with hands on their heads until the starting whistle blows. Then all will reach down, grab the rope off the ground, and begin pulling.
9. No sitting, leaning, rowing, or climbing the rope allowed.
10. The rope may not be knotted or wrapped around the body.
11. Teams will be allowed 2 cautions for violations during a pull before being disqualified.
12. Time limit will be set at a max of 60 seconds per pull. If the red flag has not crossed one of the chalk lines after 60 seconds, then the team that has the advantage at that time will be given the winning pull.
13. The top team from each Sub-Camp will compete in the finals.

Patrol Flag Competition

Patrol flags are a great opportunity for Scouts to demonstrate their creativity and show their pride in their patrols. Winners will be announced during the Saturday evening Arena Show.

1. All units participating in Peterloon 2010 may enter the Patrol Flag Competition.
2. Only one (1) Patrol Flag per unit may enter the competition. Scouts should decide how they will choose their best patrol flag to represent their unit.
3. Patrol Flags must be on display at the campsite and easily visible on either side of the unit's gateway by 9:00 a.m. Saturday for judging by the Peterloon staff.
4. Each flag must be clearly marked with the unit number and patrol name.
5. Patrol flags should identify patrol members.
6. Flags should be made prior to arrival at Peterloon.
7. Flags must be made from leather, wood, cloth, or other natural materials. Paper flags will not qualify. All wood used must meet the Emerald Ash Borer policies shown on page 27.
8. FLAGS MAY BE ANY SHAPE OR FORM, BUT MUST NOT EXCEED TWENTY-FOUR (24) INCHES IN HEIGHT OR TWENTY-FOUR (24) INCHES IN WIDTH (excluding any award ribbons that may be attached).
9. The flag must be attached to a pole.
10. Flags should display patrol award ribbons.
11. Flags should represent the Scouts' or Venturers' work, not the adults.
12. The best flag from each Sub-Camp will compete against the winners from the other Sub Camps for recognition.
13. Patrol Flag judging will include, but not be limited to, Craftsmanship, Durability, Portability, use of Scout skills, Artistic Design, and Originality.

Amazing Race

The Ku-Ni-Eh Lodge of the Order of the Arrow presents: The Amazing Race- Peterloon 2010

Can your patrol handle the pressure of working together in a timed event covering nearly 500 acres?

Your eight Scout/Venture patrol will race through Cub World, Camp Craig, and Camp Friedlander competing in challenges in eight city sites that you will have to find.

The race is a timed event that will be verified with the stamps in your patrol's Amazing Race Passport.

Working together and capitalizing on each other's strengths your patrol will be represented by one member in each challenge. Do you have the guts to eat raw squid fingernails? You won't know what the task is until its time to compete and you'll only have a few minutes to complete the task before you'll be kicked out of the city and sent on to your next destination, so quick thinking, and knowledge of your patrol member's strengths and weakness will be key!

Would you like to know the route or the different challenges? Too bad! Those are Top Secret, and we can't tell you! All we can say is if you think your patrol has what it takes to win the Amazing Race; we'll see you at Peterloon.

PETERLOON 2010

"Achievements of the Past – Foundations for the Future"

Friday Night Events

This year we have transformed our traditional Wide Area Game into some more entertaining and exciting events.

1. **Moonlight Rappelling** *(for Venturers and Scouts of Venturing age)*

Step backwards into the dark as you rappel in the moonlight. Friday night after your camp is set up you'll want to trek up to the climbing and rappelling tower and take a thrilling step into the dark! Please be aware that everyone wanting to participate in the Moonlight Rappelling will need to have with them a completed copy of the **Participant Agreement Form** found in the Forms section of this Leader's Guide. Minimum age to Rappel is Boy Scouts 13 or older + Venturers.

You can also download and print a PDF copy of the **Participant Agreement Form** at <http://peterloon.danbeard.org/PDFs/participant-agreement-form.pdf>.

No one will be allowed to climb onto the rappelling tower or rappel from it without first presenting a properly completed and signed copy of the form. You **must** have it with you!

2. **Friday Night Fright Fest**

Join us for Friday Night Fright-Fest as we watch some classic monster movies in the dark. What goes bump in the night? Wolfman and Frankenstein of course! You'll want to stop by our outdoor movie theater for some classic frights.

Safety and Sanitation

GUIDELINES FOR ALL PETERLOON PARTICIPANTS

With the large number of people attending Peterloon, the following safety rules will apply:

- No ground fires permitted. You must bring your own fuel for above-ground fires. **(Due to the Emerald Ash Borer control policies, any firewood used must be obtained from within Clermont County. See the list of available firewood distributors on page 12.)** Fires will be in stoves and grills. All stoves and grills must be attended while in use.
- Units are required to bring the following items:
 - At least 4 fire buckets
 - 1 long handle shovel
 - 1 rake
 - Trash bags for garbage
- No liquid fuel lanterns, candles or open flames in tents.
- All fuels must be stored under control of an adult. (See BSA liquid fuel policy)
- All water areas are off limits except when being used for official events. Adult unit leaders must supervise their Scouts near water.
- **No football, Frisbee, baseball or any physical contact games are to be played at Peterloon.**
- No dish washing, clothes washing, or playing is permitted at water hydrants.
- Please bring trash bags and dispose of trash in the Dumpsters at the Sub-Camp HQs.
- Please do not leave any trash on the Peterloon fields.
- Please do not burn any trash.
- Portable toilets are provided. Please keep them clean.
- **SPECIAL PETERLOON TIP:** Bring flashlights for night trips to the portable toilets!

Security

Security is provided for common areas, during the day and night. It is up to all of us to keep an eye open for problems and report them to the Peterloon Security Team as soon as possible.

- **Peterloon HQ** and each **Sub-Camp HQ** has a portable two-way radio for staff use 24 hours a day. Security problems should be reported to the Sub-Camp or Peterloon HQ staffs.
- In addition, **uniformed Explorers** will patrol the Peterloon site throughout the weekend. Alert them to any security or medical emergency.
- During the daylight hours each Sub-Camp and unit should maintain its own security by always having an adult in the campsite.
- Unit leaders are responsible to keep Scouts out of water areas, creeks, and the river at all times when not being used for an event.

PETERLOON 2010

“Achievements of the Past – Foundations for the Future”

First Aid & Emergency Procedures

- An emergency contact telephone will be staffed 24 hours per day should anyone outside need to contact anyone at Peterloon. **The phone number is 513-831-8311. When it answers, press "2" for Cub World, and then press "1" for Cub World's Admin Bldg.**
- A complete First Aid station and qualified First Aid team will be on hand at the First Aid shelter at all times. This shelter is located near the entrance bridge to Cub World.
- All serious injuries or illnesses need to be reported to the First Aid team members. If necessary, they will transport to the local hospital.
- Peterloon staff are equipped with radios and also can call the First Aid team. Contact Peterloon staff at the Cub World Administration Building
- No Scout should be taken out of camp for medical reasons without contacting the First Aid team.
- Each troop is requested to bring a First Aid kit to handle minor injuries.
- All prescription medications used by Scouts must be in possession of and dispensed by an adult leader.
- A completed health history with a parent or guardian signature, for each Scout attending, must be in the possession of the Scoutmaster. Official BSA Health Forms are available at the Scout Action Center and on-line at http://scouting.org/filestore/pdf/34605_Letter.pdf

Trading Posts

Souvenirs and snacks will be available at two trading post locations at Peterloon this year:

- The Fort -- open Saturday only from 9:00 a.m. - 5:00 p.m.
- The OA Shelter near the Sub-Camps 1&2 area - open:
 - Friday - 6:00 p.m. to 10:00 p.m.
 - Saturday - 9:00 a.m. to 5:00 p.m.
 - Sunday - 9:00 a.m. to 12:00 noon.
- Snacks, pop, and souvenirs will be available.

Food Courts & Meals

Bring a sack lunch, prepare lunch in your campsite, or take the easy way and visit the food court for lunch or dinner.

FOOD COURT — Frisch's Big Boy Dining Pavilion and the surrounding area.

Open Saturday - 10 a.m. to 5 p.m. You can purchase hot meals for lunch and supper as well as, beverages, and snacks.

PETERLOON 2010

"Achievements of the Past – Foundations for the Future"

Food Court Menus



 <p>Sandwich \$3.00</p>	 <p>Spicy Sandwich \$3.50</p>	 <p>Brownie \$1.50</p>	 <p>Cheese Cake \$2.50</p>	 <p>Lays Potato Chips \$1.00</p>
--	--	---	--	---



The Flavor of Cincinnati™

	<p>Coneys - \$2.00</p> <ul style="list-style-type: none"> • Cheese Coney Bluegrass Hot Dog in a Klosterman bun topped with Cincinnati's famous Gold Star Chili and a mound of cheese. • Chili Cheese Sandwich Cheese Coney without the hot dog.
	<p>Ways - \$5.00</p> <ul style="list-style-type: none"> • Three Way Perfectly cooked spaghetti topped with Gold Star's famous chili and a pile of Wisconsin's finest shredded cheddar cheese. • Four Way Add onions to your three way.

MEALS AT CAMP SITES — Units can also choose to cook in their camps. Patrols and crews are responsible for all meal planning, purchase, and preparation.

Bring a sack lunch, prepare lunch in your campsite, or take the easy way and visit the food court for lunch or dinner.

Religious Services

There will be five separate religious services (each one hour long) scheduled as follows:

- Jewish services will be held in the Dining Pavilion Fri. 8:00 a.m.
- Catholic services will be held in the Cub Scout Fire Ring behind the Frisch's Pavilion Sunday morning beginning at 9:00 a.m.
- LDS services will be held at the Fort Sunday morning beginning at 9:00 a.m.
- Non-denominational Protestant services will be held in the Arena Stage area Sunday morning beginning at 9:00 a.m.
- Scouts Own Service will be held in the Castle Sunday morning beginning at 9:00 a.m.

Schedule for Peterloon 2010

Friday, Oct. 15

(all scheduled events and activities are subject to change)

2:00 p.m.	<p>Begin check-in.</p> <p>Shuttle buses will begin running from the remote Peterloon parking lot to the Peterloon campsite.</p> <p>Set up camp in assigned site. Scoutmasters check in with your Sub-Camp HQ's after unloading and parking your vehicles. Pay balance of fees.</p>
6:00 p.m.	Official Opening
6:00-10:00 p.m.	Trading Posts open (OA shelter in camping area)
6:00-10:00 p.m.	<p>Moonlight Rappelling- Boy Scouts 13 & older + Venturers</p> <p>Participants must have their signed copy of their Participant Agreement Form with them.</p>
7:00-9:30 p.m.	Friday Night Fright Fest
8:00 p.m.	Jewish religious services in the Dining Pavilion.
9:00 p.m.	<p>All vehicles must be removed from campsites as you unload and before 9 p.m.</p> <p>Inter-troop campfires at your campsites (remember, no ground fires permitted.)</p>
10:15 p.m.	<p>Cracker Barrel at Sub-Camp HQs for unit leaders only.</p> <p>Attendance required for troop senior patrol leaders, Scoutmasters, and Venture crew presidents and advisers.</p> <p>Other adults and Scouts should remain in campsites.</p>
10:45 p.m.	Last shuttle bus from parking area to camp.
11:00 p.m.	Last shuttle bus from camp to parking area.

PETERLOON 2010

"Achievements of the Past – Foundations for the Future"

Saturday, Oct. 16

7:00 a.m.	Reveille! Shuttles start running.
7:15 a.m.	Flag Raising in Unit Campsites, Sub-Camp HQ's, Peterloon HQ
7:30 a.m.	Breakfast in campsites. Remember "Grace".
9:00 a.m.	<ul style="list-style-type: none"> - Action Center opens. - Climbing/Rappelling Tower Opens, (<i>High COPE will be run for Scouts 13 and older</i>) - Adult Hospitality Area (Admin. Bldg.) opens. - Gateway, Campsite, and Patrol Flag judging begins. - Sign up your Troop/Crew for the Tug-O-War competition. Register at your Sub-Camp headquarters or in Tug-O-War area. - Trading Posts open (OA shelter in camping area across the road from Sub-Camp #1 and in the Fort.)
10:00 a.m.	Food Court opens for hot meals, snacks.
1:00 p.m.	Tug-O-War competition in Action Center begins.
4:30 p.m.	Action Center and Climbing/Rappelling Tower closes.
5:00 p.m.	Food Court, Trading Posts, and Adult Hospitality Area (Admin. Bldg.) all close. Prepare, eat supper, and clean up. <i>Remember to say "Grace".</i>
6:00 p.m.	Flag lowering in Unit Campsites, Sub-Camp HQ's., and Peterloon HQ
7:00 p.m.	Begin moving toward the Arena Show.
8:00 p.m.	Arena Show (no chairs allowed!).
10:00 p.m.	All Scouts, Venturers, and Webelos restricted to unit campsites..
10:45 p.m.	Last shuttle bus to camp from parking area.
11:00 p.m.	Shuttles stop running to remote parking area. Lights out — Generators Out — All Quiet

Sunday, Oct. 17

7:00 a.m.	Reveille.
7:15 a.m.	Flag raising in Unit campsites, Sub-Camp HQs, and Peterloon HQ.
7:30 a.m.	Breakfast in campsite - Remember "Grace".
9:00 a.m.	Catholic religious services will be held in the Cub Scout Fire Ring behind the Frisch's Pavilion. LDS religious services will be held in the Fort. Non-denominational Protestant services will be held in the 1 st BB Gun Range on the right side of the Action Center Scouts Own Service will be held in the Castle
9:00 a.m.	The Trading Post opens for beverages, snacks, and souvenirs.
9:30 a.m.	Break camp, clean up campsites. Mandatory campsite inspections by Sub-Camp staffs begin. Unit leaders should alert Sub-Camp HQ when you're ready. Sub-Camp staffs to distribute Peterloon 2010 participation ribbons and patches upon each unit's successful completion of campsite clean-up and inspection.
10:00 a.m.	Buses Begin Running from Camp to/from the Remote Parking Area, Cargo vehicles allowed to enter camping area for packing. <i>(This is out of respect for Religious Services being conducted between 9:00 & 10:00)</i>
Noon	Peterloon 2010 ends. OA Trading Post closes. Shuttles will run until all Scouts have been returned to the remote parking lot.

More Information

The latest details about Peterloon 2010 are always available on the Peterloon website at www.Peterloon.DanBeard.org. Click on the "[What's New](#)" link near the top of the menu on the left side of the home page to see a list of latest changes and the date they were made. Information is also available from your District Peterloon Chairs and from your district's professional executives.

Before Peterloon

- Updates on-line at our website -- www.Peterloon.DanBeard.org
- From your district's Peterloon chairman at district roundtables.
- From your district executives and from the staff at Dan Beard Council - 513-577-7700.

During Peterloon

- Friday when you check-in. Unit leaders will receive any updated information at your Sub-Camp.
- Friday night at 10:15 PM at the Cracker Barrel in each Sub-Camp HQ, (just for Scoutmasters, SPL's, Venture Crew Presidents and Advisors)
- Saturday and Sunday at each Sub-Camp HQ and at the Info Booth inside the Volunteer Tent outside the Cub World Admin Building.

District Peterloon Chairs

- Each district has a Scouter responsible for recruiting volunteers to help support Peterloon and to share Peterloon information with unit leaders and district volunteers.
- Contact your district's Peterloon Chair for information and help with registration and other Peterloon questions.

DISTRICT	CHAIR	EMAIL	PHONE
Blue Jacket	Brian Mette	bmette@cinci.rr.com	513-519-1624 (m)
Ft. Hamilton	Jerry Oberlag	oberlag.ga@pg.com	513-728-9516 (m)
Hopewell	Rick Hauser	hauserrick@hotmail.com	513-932-4088 (h) (m)
Hopkins			(m)
Maketewa	Mike Ehler	michaielehler@gmail.com	859-317-0244 (m)
Trailblazer	Mark Barth	Barth1955@zoomtown.com	859-586-8790 (m)
U.S. Grant	Jeff Neal	jeffreyn Neal@gmail.com	513-289-2386 (m)
Wm Henry Harrison	Bill Wieland	WJWieland@cinci.rr.com	513-884-2119 (m)

PETERLOON 2010

"Achievements of the Past – Foundations for the Future"

Forms

The following forms are available on-line at the links indicated and also at the back of this Guide:

- Leaders Guide (this document):
<http://www.peterloon.danbeard.org/Leaders-Packets.htm>
- Registration Form:
<http://www.peterloon.danbeard.org/Registration.htm>
- Unit Roster:
<http://www.peterloon.danbeard.org/PDFs/Unit-Roster-P2010.pdf>
- T-Shirt Order Form:
<http://peterloon.danbeard.org/PDFs/T-Shirt-Order-Form-2010.pdf>
- Unit Volunteer Application:
<http://www.peterloon.danbeard.org/PDFs/VOL-SHEET-P08.pdf>
- Staff Volunteer Application:
<https://www.doubleknot.com/registration/calendardetail.asp?ActivityKey=841326>
- BSA Annual Health and Medical Record Form
<http://danbeard.org/pdf/annualhealth.pdf>
- Participant Agreement Form - also available on-line at
<http://peterloon.danbeard.org/Participant-Agreement-Form.htm>

Tour permits are not required for units within the Dan Beard Council. Other units should consult with your local council for their requirements. The following Tour Permit Applications are provided for your convenience.

- National Tour Permit Application - also available on-line at
<http://danbeard.org/pdf/General/NtlTour.pdf>
- <http://www.danbeard.org/pdf/General/NtlTour.pdf>
- Local Tour Permit Application - also available on-line at
<http://www.danbeard.org/pdf/General/LocalTour.pdf>

PETERLOON 2010

“Achievements of the Past – Foundations for the Future”

Peterloon Registration Form

Dan Beard Council

Boy Scouts of America

2010 PETERLOON REGISTRATION

Oct. 15 - 17, 2010 - Dan Beard Scout Reservation, Cub Scout Adventure World

Troop / Crew # _____ District _____ Council _____
 (circle one)

SEND ALL PETERLOON CORRESPONDENCE TO: (please type or print)

Leader's Name _____ Position in Troop/Crew _____

Address _____ City _____

State _____ ZIP _____ Cell # (_____) _____

Business Phone (_____) _____ Home Phone (_____) _____

Fax (_____) _____ Email _____

Attending Webelos coming from PACK # _____

Boy Scouts Attending # _____ X \$16 ea. = \$ _____

Webelos Attending # _____ X \$16 ea. = \$ _____

Adults Attending # _____ X \$16 ea. = \$ _____

Webelos Attending **SAT ONLY** # _____ X \$9 ea. = \$ _____

Per person late fee (if submitted after August 15) # _____ X \$3 ea. = \$ _____

AMOUNT DUE = \$

T-SHIRT WILL NOT BE INCLUDED IN REGISTRATION PRICE, YOU MUST PRE-ORDER ON T-SHIRT ORDER FORM

<http://peterloon.danbeard.org/PDFs/T-Shirt-Order-Form.pdf>

MAIL THIS FORM AND SEND CHECK (U.S. Funds) BY SEPTEMBER 15, 2010 TO:

Payable to: Dan Beard Council, BSA
 10078 Reading Rd.
 Cincinnati, OH 45241

Questions: (513) 577-7700 or 1 (888) 360-8572

Check box if special needs Vehicle Pass Application is needed

Statement from physician will be required for medical disability.

NOTE: ADVANCE REGISTRATION IS REQUIRED TO ATTEND PETERLOON! Due to limited parking, each unit will receive by mail, cargo vehicle passes to enter Peterloon campsite. Registration must be received by Sept. 15 to allow for mail delivery of your cargo vehicle passes. Vehicles without passes will not be admitted to the Peterloon campsite but will be routed to designated parking areas for both UNLOADING and PARKING. There will be no exceptions to this policy.

Registration must be in the Scout Achievement Center by 5:00 p.m. August 15, 2010 to avoid late fees and penalties regarding access to the Peterloon campsite. Registrations received after August 15 will require a \$3 per person late fee. Registrations end September 15, 2010.

PETERLOON - AMAZING RACE ENTRY FORM

To register your patrol for the competition, complete this form and submit it with your troop's pre-registration above. The pre-registration and Amazing Race entry forms are due by September 15, 2010. Only those patrols who have pre-registered will be eligible to compete.

TROOP # _____ **DISTRICT** _____ **COUNCIL** _____

SENIOR PATROL NAME _____ **# OF SCOUTS IN PATROL** _____
 (Senior Patrol - 1st Class and above)

SCOUT PATROL NAME _____ **# OF SCOUTS IN PATROL** _____
 (Scout Patrol - Scouts up to 2nd Class)

COUNCIL REFUND POLICY:

Individuals or groups who cancel a program reservation 60 days prior to date of event will receive a refund of fees paid less 20% administration charge. No refund made after the 60 day cancellation deadline.

OFFICE USE ONLY - ACCT. # 6801-052

Amount Received \$ _____ By _____

Date Payment Received/Postmarked _____

Revised 3/29/10

PETERLOON 2010

"Achievements of the Past – Foundations for the Future"

Unit Roster

2010 PETERLOON UNIT ROSTER

(PLEASE PRINT or TYPE)

DISTRICT _____ TROOP / CREW # _____ COUNCIL _____
(circle one)

Please complete this roster, mail it back with your registration form, and update on Friday night check-in.
(MAKE COPIES FOR YOUR RECORDS BEFORE SENDING TO COUNCIL)

On Site
Leader's Name _____ Cell Phone (_____) _____

YOUTH	Scout's Name	(check one)				UNIT #	Shirt Size
		Boy Scout	Venturer	Web 2	Web 1		
1							
2							
3							
4							
5							
6							
7							
8							
9							
10							
11							
12							
13							
14							
15							
16							
17							
18							
19							
20							

ADULTS	Adult's Name					
1						
2						
3						
4						
5						
6						

T-SHIRT Order Form

PETERLOON 2010 T-SHIRT ORDER FORM

COUNCIL _____ DISTRICT _____ TROOP / CREW # _____

Leader's Name: _____ Cell Phone # _____

E-Mail _____

After filling out the UNIT ROSTER form for those Scouters wishing to purchase a PETERLOON T-SHIRT:

1. Add the numbers on the UNIT ROSTER form by size
2. Transfer them to this form
3. Compute Grand Total
4. Keep one copy of this form for your records and turn in a copy and a check to:
 Dan Beard Council, BSA
 10078 Reading Rd
 Cincinnati, OH 45241

ALL SIZES ARE ADULT

<u>#</u>	<u>SIZE</u>		<u>COST *</u>	= \$	<u>TOTAL \$</u>
_____	Small	X	\$6.00/EA *	= \$	_____
_____	Medium	X	\$6.00/EA *	= \$	_____
_____	Large	X	\$6.00/EA *	= \$	_____
_____	X-Large	X	\$6.00/EA *	= \$	_____
_____	XX-Large	X	\$8.00/EA *	= \$	_____
_____	XXX-Large	X	\$9.00/EA *	= \$	_____
_____	XXXX-Large	X	\$10.00/EA *	= \$	_____

GRAND TOTAL = \$

All T-Shirts must be ordered by 9/15/2010.
 After 9/15/2010, T-shirt orders are FINAL
 No Refunds or Exchanges at the event
 If you want to buy additional T-Shirts at Peterloon,
 they will cost \$4 more each over the prices shown above.

Unit Volunteers Application Form

BE A PART OF PETERLOON 2010

UNIT VOLUNTEERS

SCOUTMASTERS

WE NEED TWO ADULTS FROM YOUR UNIT FOR

4 HOURS EACH

on SATURDAY

(Note: This is in addition to any Unit or District events you might be signed up for.)
VOLUNTEERS RECEIVE A SPECIAL STAFF GIFT FOR WORKING 4 HOURS
(Not a hat)

----- RETURN THIS SECTION TO COUNCIL WITH YOUR UNIT REGISTRATION -----

PLEASE PRINT LEGIBLY OR TYPE TO INSURE PROPER REGISTRATION

(Circle One & Enter Unit #) Pack / Troop / Crew _____ DISTRICT _____

(* Cell Phone Numbers Preferred)

UNIT VOLUNTEER #1		UNIT VOLUNTEER #2	
NAME: _____		NAME: _____	
* PHONE # _____		* PHONE # _____	
EMAIL: _____		EMAIL: _____	
INDICATE PREFERENCE: (Circle One Below)		INDICATE PREFERENCE: (Circle One Below)	
SAT AM (8:30 – 12:30)	SAT PM (12:00 – 4:00)	SAT AM (8:30 – 12:30)	SAT PM (12:00 – 4:00)

ASSIGNMENTS AVAILABLE AT CRACKER BAREL FRIDAY NIGHT

PLEASE ARRIVE 15 MINUTES EARLY

ADDITIONAL VOLUNTEERS ARE WELCOME

ANY QUESTIONS E-MAIL TIM CARTER AT volunteer@peterloon.danbeard.org

PETERLOON 2010

“Achievements of the Past – Foundations for the Future”

Medical Form

Annual Health and Medical Record

(Valid for 12 calendar months)

Medical Information

The Boy Scouts of America recommends that all youth and adult members have annual medical evaluations by a certified and licensed health-care provider. In an effort to provide better care to those who may become ill or injured and to provide youth members and adult leaders a better understanding of their own physical capabilities, the Boy Scouts of America has established minimum standards for providing medical information prior to participating in various activities. Those standards are offered below in one three-part medical form. Note that unit leaders must always protect the privacy of unit participants by protecting their medical information.

Parts A and C are to be completed annually by all BSA unit members. Both parts are required for all events that do not exceed 72 consecutive hours, where the level of activity is similar to that normally expended at home or at school, such as day camp, day hikes, swimming parties, or an overnight camp, and where medical care is readily available. Medical information required includes a current health history and list of medications. Part C also includes the parental informed consent and hold harmless/release agreement (with an area for notarization if required by your state) as well as a talent release statement. Adult unit leaders should review participants' health histories and become knowledgeable about the medical needs of the youth members in their unit. This form is to be filled out by participants and parents or guardians and kept on file for easy reference.

Part B is required with parts A and C for any event that exceeds 72 consecutive hours, or when the nature of the activity is strenuous and demanding, such as a high-adventure trek. Service projects or work weekends may also fit this description. It is to be completed and signed by a certified and licensed health-care provider—physician (MD, DO), nurse practitioner, or physician's assistant as appropriate for your state. The level of activity ranges from what is normally expended at home or at school to strenuous activity such as hiking and backpacking. Other examples include tour camping, jamborees, and Wood Badge training courses. It is important to note that the height/weight limits must be strictly adhered to if the event will take the unit beyond a radius wherein emergency evacuation is more than 30 minutes by ground transportation, such as backpacking trips, high-adventure activities, and conservation projects in remote areas.

Risk Factors

Based on the vast experience of the medical community, the BSA has identified that the following risk factors may define your participation in various outdoor adventures.

- Excessive body weight
- Heart disease
- Hypertension (high blood pressure)
- Diabetes
- Seizures
- Lack of appropriate immunizations
- Asthma
- Sleep disorders
- Allergies/anaphylaxis
- Muscular/skeletal injuries
- Psychiatric/psychological and emotional difficulties

For more information on medical risk factors, visit Scouting Safely on www.scouting.org.

Prescriptions

The taking of prescription medication is the responsibility of the individual taking the medication and/or that individual's parent or guardian. A leader, after obtaining all the necessary information, can agree to accept the responsibility of making sure a youth takes the necessary medication at the appropriate time, but BSA does not mandate or necessarily encourage the leader to do so. Also, if state laws are more limiting, they must be followed.

For frequently asked questions about this Annual Health and Medical Record, see Scouting Safely online at <http://www.scouting.org/scoutsources/HealthandSafety.aspx>. Information about the Health Insurance Portability and Accountability Act (HIPAA) may be found at <http://www.hipaa.org>.



BOY SCOUTS OF AMERICA.

PETERLOON 2010

“Achievements of the Past – Foundations for the Future”

Annual Health and Medical Record

(Valid for 12 calendar months)

Emergency contact No.:

Allergies:

DOB:

Last name:

Annual BSA Health and Medical Record

Part A

GENERAL INFORMATION

Name _____ Date of birth _____ Age _____ Male Female
 Address _____ Grade completed (youth only) _____
 City _____ State _____ Zip _____ Phone No. _____
 Unit leader _____ Council name/No. _____ Unit No. _____
 Social Security No. (optional; may be required by medical facilities for treatment) _____ Religious preference _____
 Health/accident insurance company _____ Policy No. _____

ATTACH A PHOTOCOPY OF BOTH SIDES OF INSURANCE CARD (SEE PART C). IF FAMILY HAS NO MEDICAL INSURANCE, STATE "NONE."
In case of emergency, notify:

Name _____ Relationship _____
 Address _____
 Home phone _____ Business phone _____ Cell phone _____
 Alternate contact _____ Alternate's phone _____

MEDICAL HISTORY

Are you now, or have you ever been treated for any of the following:

Yes	No	Condition	Explain
		Asthma	
		Diabetes	
		Hypertension (high blood pressure)	
		Heart disease (i.e., CHF, CAD, MI)	
		Stroke/TIA	
		COPD	
		Ear/sinus problems	
		Muscular/skeletal condition	
		Menstrual problems (women only)	
		Psychiatric/psychological and emotional difficulties	
		Learning disorders (i.e., ADHD, ADD)	
		Bleeding disorders	
		Fainting spells	
		Thyroid disease	
		Kidney disease	
		Sickle cell disease	
		Seizures	
		Sleep disorders (i.e., sleep apnea)	
		GI problems (i.e., abdominal, digestive)	
		Surgery	
		Serious injury	
		Other	

Allergies or Reaction to:

Medication _____
 Food, Plants, or Insect Bites _____

Immunizations:

The following are recommended by the BSA. Tetanus immunization must have been received within the last 10 years. If had disease, put "D" and the year. If immunized, check the box and the year received.

Yes	No	Date
<input type="checkbox"/>	<input type="checkbox"/>	Tetanus _____
<input type="checkbox"/>	<input type="checkbox"/>	Pertussis _____
<input type="checkbox"/>	<input type="checkbox"/>	Diphtheria _____
<input type="checkbox"/>	<input type="checkbox"/>	Measles _____
<input type="checkbox"/>	<input type="checkbox"/>	Mumps _____
<input type="checkbox"/>	<input type="checkbox"/>	Rubella _____
<input type="checkbox"/>	<input type="checkbox"/>	Polio _____
<input type="checkbox"/>	<input type="checkbox"/>	Chicken pox _____
<input type="checkbox"/>	<input type="checkbox"/>	Hepatitis A _____
<input type="checkbox"/>	<input type="checkbox"/>	Hepatitis B _____
<input type="checkbox"/>	<input type="checkbox"/>	Influenza _____
<input type="checkbox"/>	<input type="checkbox"/>	Other (i.e., HIB) _____

Exemption to immunizations claimed.

MEDICATIONS

List all medications currently used. (If additional space is needed, please photocopy this part of the health form.) Inhalers and EpiPen information must be included, even if they are for occasional or emergency use only.

(For more information about immunizations, as well as the immunization exemption form, see Scouting Safely on Scouting.org.)

Medication _____ Strength _____ Frequency _____ Approximate date started _____ Reason for medication _____ Distribution approved by: _____ Parent signature _____ MD/DO, NP, or PA Signature Temporary <input type="checkbox"/> Permanent <input type="checkbox"/>	Medication _____ Strength _____ Frequency _____ Approximate date started _____ Reason for medication _____ Distribution approved by: _____ Parent signature _____ MD/DO, NP, or PA Signature Temporary <input type="checkbox"/> Permanent <input type="checkbox"/>	Medication _____ Strength _____ Frequency _____ Approximate date started _____ Reason for medication _____ Distribution approved by: _____ Parent signature _____ MD/DO, NP, or PA Signature Temporary <input type="checkbox"/> Permanent <input type="checkbox"/>
Medication _____ Strength _____ Frequency _____ Approximate date started _____ Reason for medication _____ Distribution approved by: _____ Parent signature _____ MD/DO, NP, or PA Signature Temporary <input type="checkbox"/> Permanent <input type="checkbox"/>	Medication _____ Strength _____ Frequency _____ Approximate date started _____ Reason for medication _____ Distribution approved by: _____ Parent signature _____ MD/DO, NP, or PA Signature Temporary <input type="checkbox"/> Permanent <input type="checkbox"/>	Medication _____ Strength _____ Frequency _____ Approximate date started _____ Reason for medication _____ Distribution approved by: _____ Parent signature _____ MD/DO, NP, or PA Signature Temporary <input type="checkbox"/> Permanent <input type="checkbox"/>

NOTE: Be sure to bring medications in the appropriate containers, and make sure that they are NOT expired, including inhalers and EpiPens. You SHOULD NOT STOP taking any maintenance medication.

PETERLOON 2010

“Achievements of the Past – Foundations for the Future”

Part B

PHYSICAL EXAMINATION

Height _____ Weight _____ % body fat _____ Meets height/weight limits Yes No
 Blood pressure _____ Pulse _____

Individuals desiring to participate in any high-adventure activity or event in which emergency evacuation would take longer than 30 minutes by ground transportation will not be permitted to do so if they exceed the height/weight limits as documented in the table at the bottom of this page or if during a physical exam their health care provider determines that body fat percentage is outside the range of 10 to 31 percent for a woman or 2 to 25 percent for a man. Enforcing this limit is strongly encouraged for all other events, but it is not mandatory. (For healthy height/weight guidelines, visit www.cdc.gov.)

	Normal	Abnormal	Explain Any Abnormalities	Range of Mobility	Normal	Abnormal	Explain Any Abnormalities
Eyes				Knees (both)			
Ears				Ankles (both)			
Nose				Spine			
Throat							
Lungs				Other	Yes	No	
Heart				Contacts			
Abdomen				Dentures			
Genitalia				Braces			
Skin				Inguinal hernia			Explain
Emotional adjustment				Medical equipment (i.e., CPAP, oxygen)			
Tuberculosis (TB) skin test (if required by your state for BSA camp staff)				<input type="checkbox"/> Negative	<input type="checkbox"/> Positive		

Allergies (to what agent, type of reaction, treatment): _____

I certify that I have, today, reviewed the health history, examined this person, and approve this individual for participation in:

- Hiking and camping
- Competitive activities
- Backpacking
- Swimming/water activities
- Climbing/rappelling
- Sports
- Horseback riding
- Scuba diving
- Mountain biking
- Challenge ("ropes") course
- Cold-weather activity (<10°F)
- Wilderness/backcountry treks

Specify restrictions (if none, so state) _____

Certified and licensed health-care providers recognized by the BSA to perform this exam include physicians (MD, DO), nurse practitioners, and physician's assistants.

- To Health Care Provider:** Restricted approval includes:
- Uncontrolled heart disease, asthma, or hypertension.
 - Uncontrolled psychiatric disorders.
 - Poorly controlled diabetes.
 - Orthopedic injuries not cleared by a physician.
 - Newly diagnosed seizure events (within 6 months).
 - For scuba, use of medications to control diabetes, asthma, or seizures.

Provider printed name _____
 Signature _____
 Address _____
 City, state, zip _____
 Office phone _____
 Date _____

Height (inches)	Recommended Weight (lbs)	Allowable Exception	Maximum Acceptance
60	97-138	139-166	166
61	101-143	144-172	172
62	104-148	149-178	178
63	107-152	153-183	183
64	111-157	158-189	189
65	114-162	163-195	195
66	118-167	168-201	201
67	121-172	173-207	207
68	125-178	179-214	214
69	129-185	186-220	220

Height (inches)	Recommended Weight (lbs)	Allowable Exception	Maximum Acceptance
70	132-188	189-226	226
71	136-194	195-233	233
72	140-199	200-239	239
73	144-205	206-246	246
74	148-210	211-252	252
75	152-216	217-260	260
76	156-222	223-267	267
77	160-228	229-274	274
78	164-234	235-281	281
79 & over	170-240	241-295	295

This table is based on the revised Dietary Guidelines for Americans from the U.S. Dept. of Agriculture and the Dept. of Health & Human Services.

Part B Last name: _____ DOB: _____

Part C

Informed Consent and Hold Harmless/Release Agreement

I understand that participation in Scouting activities involves a certain degree of risk. I have carefully considered the risk involved and have given consent for myself and/or my child to participate in these activities. I understand that participation in these activities is entirely voluntary and requires participants to abide by applicable rules and standards of conduct. I release the Boy Scouts of America, the local council, the activity coordinators, and all employees, volunteers, related parties, or other organizations associated with the activity from any and all claims or liability arising out of this participation.

I approve the sharing of the information on this form with BSA volunteers and professionals who need to know of medical situations that might require special consideration for the safe conducting of Scouting activities.

In case of an emergency involving me or my child, I understand that every effort will be made to contact the individual listed as the emergency contact person. In the event that this person cannot be reached, permission is hereby given to the medical provider selected by the adult leader in charge to secure proper treatment, including hospitalization, anesthesia, surgery, or injections of medication for me or my child. Medical providers are authorized to disclose to the adult in charge Protected Health Information/ Confidential Health Information (PHI/CHI) under the Standards for Privacy of Individually Identifiable Health Information, 45 C.F.R. §§160.103, 164.501, etc. seq., as amended from time to time, including examination findings, test results, and treatment provided for purposes of medical evaluation of the participant, follow-up and communication with the participant's parents or guardian, and/or determination of the participant's ability to continue in the program activities.

- Without restrictions.
- With special considerations or restrictions (list) _____

I hereby assign and grant to the local council and the Boy Scouts of America the right and permission to use and publish the photographs/ film/videotapes/electronic representations and/or sound recordings made of me or my child at all Scouting activities, and I hereby release the Boy Scouts of America, the local council, the activity coordinators, and all employees, volunteers, related parties, or other organizations associated with the activity from any and all liability from such use and publication.

I hereby authorize the reproduction, sale, copyright, exhibit, broadcast, electronic storage, and/or distribution of said photographs/ film/videotapes/electronic representations and/or sound recordings without limitation at the discretion of the Boy Scouts of America, and I specifically waive any right to any compensation I may have for any of the foregoing.

yes No

Adults authorized to take youth to and from the event: (You must designate at least one adult. Please include a telephone number.)

1. _____
2. _____
3. _____

Adults NOT authorized to take youth to and from the event:

1. _____
2. _____
3. _____

I understand that, if any information I/we have provided is found to be inaccurate, it may limit and/or eliminate the opportunity for participation in any event or activity.

Participant's name _____

Participant's signature _____

Parent/guardian's signature _____ (if under the age of 18)

Date _____

Attach copy of insurance card (front and back) here. If required by your state, use the space provided here for notarization.



BOY SCOUTS OF AMERICA
1325 West Walnut Hill Lane
P.O. Box 152079
Irving, Texas 75015-2079
<http://www.scouting.org>



Part C Last name: _____ DOB: _____

Rev. 9/2009

Participant Agreement Form

Peterloon offers the opportunity to use established climbing and rappelling facilities.

We operate these facilities safely with trained and certified instructors, but we are required to have a signed Participant Agreement Form submitted for anyone who wishes to use these facilities. If you plan on climbing or rappelling, you must bring a completed and signed copy of the agreement form, shown on the following page, to the tower with you.

You can also pick up copies at the Dan Beard Scout Action Center or download a PDF copy of this form at <http://peterloon.danbeard.org/PDFs/participant-agreement-form.pdf>.

We will have a limited number of blank forms available at Peterloon that you can fill out and have your Scoutmaster or other authorized adult to sign for your parents or guardians if you are under 18 years old, but this will take time and require more coordination during the event, and in an event of this size we may run out of blank forms, so it will be better for you to bring a completed form to Peterloon with you.

In any case, you must have a properly completed copy with you. NO ONE will be permitted to climb or rappel without one.

See Participant Agreement Form on the following page!

PETERLOON 2010

“Achievements of the Past – Foundations for the Future”

Participant Agreement Form

(To be completed by all participants and submitted upon arrival to event)

Element of Danger Statement: As in any physical activity, there is an element of risk during the event. I understand there are inherent risks that cannot be eliminated from these activities. I have full knowledge of the nature and extent of the risks including, but not limited to:

1. Injuries resulting from falling from a height up to 60', collision with the Tower structure, high course events, low course events, or other obstacles.
2. Injuries resulting from rope abrasion, entanglement, and other injuries that may result from activities or other persons, including but not limited to slipping, trip and fall, climbing, rappelling, belaying, lowering on a rope, rescue or emergency activities, as well as injuries, abrasions, and cuts resulting from contact with the ground, equipment, and components of the program elements.
3. Failure of the ropes, harnesses, course hardware, anchor points, or any other part of the challenge course structure or equipment. Injuries from falling participants or equipment.
4. Injuries resulting from the *negligence* of other course participants, belayers, spotters, spectators or staff members.

Certification of Fitness: All material pre-existing health conditions and physical limitations of the participant will be disclosed by the participant or the participant's parent or guardian in writing before beginning any activity. I have listed below any medical conditions which may hinder my abilities in the selected activities.

1. Do you have any limiting physical disability, or conditions (temporary or permanent)? **YES NO**
If yes, identify and explain: _____
2. Are you currently taking medication (prescribed or otherwise)? **YES NO**
If yes, identify and explain: _____
3. Please list any allergies to food, medicine, plant, animal, insect, other: _____

4. Have or subject to: (Check if yes) Asthma Fainting Spells Convulsions Diabetes
Angina Epilepsy Drug Reactions Bleeding Disorders Heart Trouble Prosthesis
Explain any checked boxes: _____

Medical Permission: This health information is correct so far as I know, and the person herein described has permission to engage in all prescribed activities, except as noted by me or a physician. In the event of an emergency, I understand a reasonable attempt will be made to reach my emergency contact. If unable to reach that contact, I hereby give permission to the physician, selected by the adult leaders in charge, to secure proper treatment, including hospitalization, anesthesia, surgery, or injections of medication.

Talent Release: I grant permission to the Dan Beard Council, or its' assignees to use and publish my likeness in photo/video format or electronic representation for event and corporate promotional use. I release the Dan Beard Council, BSA from all associated liability and waive the right to compensation.

I HAVE READ THIS PARTICIPANT AGREEMENT, FULLY UNDERSTAND ITS TERMS, AND HAVE SIGNED IT FREELY AND VOLUNTARILY WITHOUT ANY INDUCEMENT, ASSURANCE, OR GUARANTEE BEING MADE TO ME. I HEREBY RELEASE AND HOLD HARMLESS, AND WAIVE ALL CLAIMS I MAY HAVE AGAINST BOY SCOUTS OF AMERICA, DAN BEARD COUNCIL, BSA, ACTIVITY CORDINATOR(S), ALL EMPLOYEES, VOLUNTEERS, OR OTHER ASSOCIATED ORGANIZATIONS.

<i>Participant's Signature</i>	<i>Printed Name</i>	<i>Date</i>
<i>Parent or Guardian (If under 18 years old)</i>	<i>Printed Name</i>	<i>Date</i>
Address: _____ City: _____ State: _____ Zip: _____		
Home Phone: _____ Alternate Phone: _____		
Emergency Contact: (Name) _____ Phone: _____		

Bring your completed copy of this form to the tower with you!

PETERLOON 2010
"Achievements of the Past – Foundations for the Future"

National Tour Permit Application

NATIONAL TOUR PERMIT APPLICATION

LOCAL COUNCIL TIME STAMP	REGIONAL TIME STAMP
--------------------------	---------------------

A National Tour Permit is required for all groups traveling to areas 500 miles or more one way from home area (local council camp excepted), or crossing national boundaries into the territory of other nations. This application should be submitted, typed or printed, to the local council service center for approval at least one month before your tour. Then the council service center will forward it to the regional service center for further approval. It is essential that you read *Tours and Expeditions*, No. 33737C, before filling out this form. For trips and overnight camps less than 500 miles one way, use Local Tour Permit Application, No. 34426B.

FOR TOURS 500 MILES OR MORE AND TOURS OUTSIDE THE U.S.A.

Current date _____
 Council name _____ Type of unit _____ No. _____
 Council address _____
 Purpose of this trip is _____
 From (city and state) _____ to _____
 Mileage round trip _____ Dates / / to / / Total days _____
 Is accident insurance in force for this unit? Yes No Company _____ Policy no. _____

LEADERSHIP AND PERSONNEL (Boy Scouts of America policy requires at least two adult leaders on all camping trips and tours. Coed Venturing crews must have both male and female leadership.)

1. The adult leader in charge of this group must be at least 21 years old.
 Name _____ Age _____ Scouting position _____ Expiration date _____
 Street or R.F.D. _____
 City _____ State _____ Zip code _____
 Home phone () _____ Business phone () _____
 List experience and training for this responsibility. _____
 I have in my possession a copy of *Guide to Safe Scouting*, No. 34416B, and have read it. _____
 Adult leader's signature _____

2. Associate adult leader name(s) (minimum age 18) Age _____ Scouting position _____ Expiration date _____
 Address _____ Phone () _____
 Address _____ Phone () _____

Attach a list with additional names and information as outlined above.

3. Party will consist of (number):
 _____ Cub Scouts
 _____ Boy Scouts
 _____ Varsity Scouts
 _____ Venturers—male
 _____ Venturers—female
 _____ Adults—male
 _____ Adults—female
 _____ Total

4. Party will travel by:
 Car
 Bus
 Train
 Plane
 Canoe
 Van
 Boat
 Foot
 Cycle

If traveling by other methods, please specify:

 Party will travel with another crew that has a male or female (circle one) leader. This leader will be responsible for the Venturer(s) of my crew.
 Advisor _____
 Other crew's no. _____
 Council _____

TRANSPORTATION

5. You will enforce reasonable travel speed in accordance with state and local laws in all motor vehicles.
 6. If traveling by motor vehicle:
 a. *Driver qualifications:* All drivers must have a valid driver's license that has not been suspended or revoked for any reason, and must be at least 18 years of age. **Youth-member exception:** When traveling to an area, regional, or national Boy Scout activity, or any Venturing event under the leadership of an adult (21+) tour leader, a youth member at least 16 years of age may be a driver, subject to the following conditions: (1) Six months' driving experience as a licensed driver (time on a learner's permit or equivalent is not to be counted); (2) No record of accidents or moving violations; (3) Parental permission has been granted to leader, driver, and riders.

NATIONAL TOUR PERMIT	THIS IS TO CERTIFY THAT	COUNCIL NUMBER _____
Permission is granted to:		
Tour leader _____		Date Issued _____
Type of unit _____	No. _____	Council _____
Council address _____		
For trip from _____	to _____	
Dates _____	to _____	20 _____

This permit is granted with the understanding that the group is prepared to meet its own expenses and that no soliciting of funds or of special concessions because of its connection with the Boy Scouts of America will be permitted en route.
 Any person to whom this permit is presented is advised that proper assurance has been given to approved representatives of the Boy Scouts of America that members of this group are qualified campers and are familiar with the standards and objectives of good Scouting and will conduct themselves accordingly.

Regional authorization _____

- b. If the vehicle to be used is designed to carry more than 15 persons (including driver), the driver must have a commercial driver's license (CDL).
Name _____ CDL expiration date _____
- c. Driving time is limited to a maximum of 10 hours and must be interrupted by frequent rest, food, and recreation stops. If only one driver, then reduce driving time and stop more frequently.
- d. Seat belts are provided, and must be used, by all passengers and driver. Exception: A school or commercial bus, where not required by law.
- e. Passengers will ride only in the cab if trucks are used.

INSURANCE

All vehicles MUST be covered by a public liability and property damage liability insurance policy. The amount of this coverage must meet or exceed the insurance requirement of the state in which the vehicle is licensed. (It is recommended, however, that coverage limits are at least \$50,000/\$100,000/\$50,000 or \$100,000 combined single limit.) Any vehicle carrying 10 or more passengers is required to have limits of \$100,000/\$500,000/\$100,000 or \$500,000 combined single limit. In the case of rented vehicles, the requirement of coverage limits can be met by combining the limits of personal coverage carried by the driver with coverage carried by the owner of the rented vehicle. All vehicles used in travel outside the United States must carry a public liability and property damage liability insurance policy that complies with or exceeds the requirements of that country. Attach an additional page if more space is required.

KIND YEAR AND MAKE OF VEHICLE	NUMBER OF PASSENGERS	OWNER'S NAME	DRIVER'S LICENSE NUMBER*	DOES EVERYONE HAVE SEAT BELTS?	PUBLIC LIABILITY INSURANCE COVERAGE		
					PUBLIC LIABILITY		PROPERTY DAMAGE
					Each Person	Each Accident	
					\$	\$	\$

*All drivers must have a valid driver's license that has not been suspended or revoked for any reason.

- 7. If traveling by public carrier, plane, or boat:
 - a. Operations are in accord with state and federal laws.
 - b. Insurance coverage is adequate.

HEALTH—SAFETY—AQUATICS—CLIMBING/RAPPELING—SANITATION—WILDERNESS USE POLICY—YOUTH PROTECTION TRAINING

- 8. a. Where swimming or boating is included in the program, Safe Swim Defense, No. 34370A, and/or Safety Afloat, No. 34368B, standards are to be followed. If climbing/rappelling is included, then Climb On Safety, No. 3206 (which recommends the American Red Cross's standard first aid and When Help is Delayed or equivalent course), must be followed.

One adult in the group must be trained as outlined:

NAME	AGE	SAFE SWIM DEFENSE EXPIRATION DATE	SAFETY AFLOAT EXPIRATION DATE	CLIMB ON SAFETY DATE TAKEN

At least one person must be trained in CPR from any recognized agency for Safety Afloat and Climb On Safety.

NAME	AGE	CPR TRAINING	AGENCY	EXPIRATION DATE

- b. Our travel equipment will include: first-aid kit, road emergency kit.
- c. Units going into the wilderness or backcountry must carry and abide by the Wilderness Use Policy, No. 20-121.
- d. The group leader will have in his or her possession the appropriate health and medical forms for every leader and participant.
- e. All registered adults participating in any nationally conducted event or activity must have completed the BSA Youth Protection Training.
- f. At least one registered adult who has completed BSA Youth Protection Training must be present at all other events and activities that require a tour permit.

Itinerary: It is required that the following information be provided for each day of the tour: (Note: Speed or excessive daily mileage increases the possibility of accidents.) Attach an additional page if more space is required.

DATE	TRAVEL		MILEAGE	OVERNIGHT STOPPING PLACE (Check if reservations are cleared.)	✓
	From	To			

THE INTERNATIONAL LETTER OF INTRODUCTION

Individuals wanting an International Letter of Introduction for travel to another country alone or with family members should use the International Letter of Introduction Application, No. 22-12B, available from your local council service center. (See "Planning an International Experience" in *Tours and Expeditions*, No. 33737C, for tips on planning international tours.)

We hereby verify that we consider the leadership of this tour adequate in every way, that the foregoing statements are correct, and that we will comply with the policies and procedures for tours and expeditions as established by the Boy Scouts of America. **In the event of any serious injury or fatality occurring during this activity, we will notify our local council immediately.**

Signatures Required:

Approved _____ Unit no. _____ Date _____
(Chairman of committee)

Approved _____
(Tour leader)

Send this entire application to your local council service center for approval at least one month prior to the activity.

Approved _____ Council no. _____ Date _____
(Scout association)

For Regional Use Only:
Approved by _____ Region W C S NE Date _____



4419C
2009 Boy Scouts of America

PETERLOON 2010

"Achievements of the Past – Foundations for the Future"



3. Party will consist of (number):

Cub Scouts Boy Scouts Varsity Scouts

Venturers—male Venturers—female

Adults—male Adults—female Total

4. Party will travel by:

Car Bus Train Plane

Canoe Van Boat Foot

Bicycle

If traveling by other methods, please specify. _____

Party will travel with another unit/crew that has a male or female (circle one) leader. This leader will be responsible for the Venturer(s) of my crew.

Advisor _____ Other crew's no. _____ Council _____

Tour involves: Swimming Boating Climbing Orientation flights (attach Flying Permit, No. 19-672, required)

Wilderness or backcountry (must carry Wilderness Use Policy and follow principles of Leave No Trace Camping)

Activity Standards: Where swimming or boating is included in the program, Safe Swim Defense and/or Safety Afloat standards are to be followed. If climbing/rappelling is included, then Climb On Safely must be followed. At least one person must be trained in CPR from any recognized agency for Safety Afloat and Climb On Safely. At least one adult on a pack overnighiter must have completed Basic Adult Leader Outdoor Orientation (BALOO). Effective for tours on January 1, 2009, at least one adult must have completed Planning and Preparing for Hazardous Weather training.

Name	Age	Safe Swim Defense expiration (two years from date taken)	Safety Afloat expiration (two years from date taken)	Climb On Safely date taken
Name	Age	CPR training	Agency	Expiration Date
Name	Age	Date BALOO Training Completed	Planning and Preparing for Hazardous Weather Training valid until (two years from date completed)	Youth Protection expiration (two years from date taken)
Name	Age	NIA Instructor and/or RSO		
		<input type="checkbox"/> Rifle <input type="checkbox"/> Shotgun <input type="checkbox"/> Pistol <input type="checkbox"/> Range Safety Officer <input type="checkbox"/> Muzzle-loading rifle <input type="checkbox"/> Muzzle-loading shotgun		

INSURANCE

All vehicles MUST be covered by a liability and property damage insurance policy. The amount of this coverage must meet or exceed the insurance requirement of the state in which the vehicle is licensed and comply with or exceed the requirements of the country of destination for travel outside the United States. (It is recommended, however, that coverage limits are at least \$50,000/\$100,000/\$50,000 or \$100,000 combined single limit.) Any vehicle designed to carry 10 or more passengers is required to have limits of \$100,000/\$500,000/\$100,000 or \$500,000 combined single limit. In the case of rented vehicles the requirement of coverage limits can be met by combining the limits of personal coverage carried by the driver with coverage carried by the owner of the rented vehicle.

KIND, YEAR, AND MAKE OF VEHICLE	NUMBER OF PASSENGERS	OWNER'S NAME	DRIVER'S LICENSE NUMBER	WILL EVERYONE WEAR A SEATBELT?	LIABILITY INSURANCE COVERAGE		
					LIABILITY Each Person	LIABILITY Each Accident	PROPERTY DAMAGE
					\$	\$	\$

The local council may allow a list of the above information to be attached to the permit in order to expedite the process. Each unit may circle the names of the drivers for an event or an activity.

TRANSPORTATION GUIDELINES

- You will observe reasonable travel speed in accordance with state and local laws in all motor vehicles.
- If by motor vehicle:
 - Driver Qualifications: All drivers must have a valid driver's license and be at least 18 years of age. **Youth Member Exception:** When traveling to an area, regional, or national Boy Scout activity or any Venturing event under the leadership of an adult (21+) tour leader, a youth member at least 16 years of age may be a driver, subject to the following conditions: (1) Six months' driving experience as a licensed driver (time on a learner's permit or equivalent is not to be counted); (2) no record of accidents or moving violations; (3) parental permission has been granted to leader, driver, and rider.
 - If the vehicle to be used is designed to carry more than 15 people (including driver) the driver must have a commercial driver's license (CDL).

Name: _____

C.D.L. expiration date: _____

- Driving time is limited to a maximum of 10 hours and must be interrupted by frequent rest, food, and recreation stops.
- Seat belts are provided, and must be used, by all passengers and driver. Exception: A school or commercial bus, when not required by law.
- Passengers will ride only in the cab if trucks are used.

OUR PLEDGE OF PERFORMANCE

- We will use the Safe Swim Defense in any swimming activity. Safety Afloat in all craft activity on the water, and Climb On Safely for climbing activity.
- We will use trucks only for transporting equipment—no passengers except in the cab. All passenger cars, station wagons, recreational vehicles, and cabs of trucks will have a seat belt for each passenger.
- We agree to observe reasonable travel speed (in accordance with national, state, and local laws) and use only vehicles that are in safe mechanical condition.
- We will be certain that tires are inflated at all times.
- We will apply for a fire permit from local authorities in all areas where it is required.
- We will at all times be a credit to the Boy Scouts of America and will not tolerate swagging or un-Scoutlike conduct, keeping a constant check on all members of our group.
- We will maintain high standards of personal cleanliness and orderliness and will operate a clean and sanitary camp, keeping it in a better condition than we found it.
- We will not litter or bury any trash, garbage, or tin cans. All rubbish that cannot be burned will be placed in a bio-filter bag and taken to the nearest recognized trash disposal or all the way home, if necessary.
- We will not deface trees, rock formations, or other objects with initials or writing.
- We will respect the property of others and will not trespass.
- We will not cut standing trees or shrubs without specific permission from the landowner or manager.
- We will collect only souvenirs that are gifts to us or that we purchase.
- We will pay our own way and not expect concessions or entertainment from any individual or group.
- We will provide every member of our party an opportunity to attend religious services on the Sabbath.
- We will observe the courtesy to which you are entitled to persons who assisted us on our trip.
- We will, in case of backcountry expeditions, read and abide by the Wilderness Use Policy of the BSA.
- We will notify, in case of serious trouble, our local council service center, our parents, or other local contact.
- If more than one vehicle is used to transport our group, we will establish rendezvous points at the start of each day and not attempt to have drivers closely follow the group vehicle in front of them.

PETERLOON 2010

"Achievements of the Past – Foundations for the Future"

Peterloon Evaluation & Feedback Form

District:

Troop/Crew/Pack:

At Peterloon 2010 we worked to maintain many of the most popular jamboree type events from previous Peterloons and add some new activities and programs as well – focusing on patrol competition, reinforcing the Patrol Method, and highlighting our theme this year of *“Achievements of the Past – Foundations for the Future.”* We also tried to make progress in overcoming some of the logistical challenges inherent with an event of this size, which turned out to be our largest Peterloon ever. Your feedback will help us understand what worked well and what we can try to improve at the next Peterloon.

Please complete and mail this evaluation to the Program Office of the Dan Beard Council by Oct. 24, 2010.

Peterloon 2010
 Program Office
 Dan Beard Council BSA
 10078 Reading Road, Cincinnati, OH 45241

Your input is appreciated.

1. Considering everything about the Peterloon events you have attended, which did you prefer?

		(CHECK ONE)	Comments
a.	Preferred this Peterloon	<input type="checkbox"/>	
b.	Preferred other Peterloons	<input type="checkbox"/>	
c.	N/A - This is our first Peterloon	<input type="checkbox"/>	

2. Please tell us everything you LIKED about Peterloon 2010:

3. Please tell us everything you **DISLIKED** about Peterloon 2010 and how you think it could be improved: *(use additional pages if necessary – learning from mistakes is how we improve)*

4. Please rate each of the following items by typing a number in the box that best represents your view and give us comments to help us better understand why you selected your rating.:

EXCELLENT POOR

	5	4	3	2	1	Comments
<u>Information & Registration:</u>						
a. Leader's Guide						
b. Guide Book						
c. Web Site						
d. Registration Process						
e. Check-In						
f. Cost						
g. Saturday On-Site Info						

	5	4	3	2	1	Comments
<u>Physical Arrangements / Support Services:</u>						
a. Parking						
b. Shuttle System						
c. Camping Arrangements						
d. Port-O-Lets / Water						
e. Time of Year (weather)						

f. Location (Cub World)						
g. First Aid Services						
h. Trash Containers						
i. Staff						
j. Security						

	5	4	3	2	1	Comments
Programs / Events / Activities:						
a. Trading Post Inventory						
b. Trading Post Locations						
c. Food Concessions						
d. Saturday Activities						
e. Midway						
f. Competition Events Campsites, Gateways, Patrol Flags, Tug-O-War; Amazing Race						
g. District Sponsored Events						
h. Arena Show Setup &Program						
i. Religious Services Setup						
j. Event Queuing (Lines)						

	5	4	3	2	1	Comments
OVERALL RATING:						

Optional contact information if you wish:

(name)
(phone)
(email)